

## Product datasheet for **TA332588**

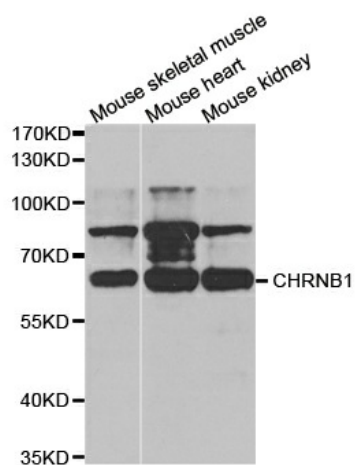
### CHRNB1 Rabbit Polyclonal Antibody

#### Product data:

Product Type:	Primary Antibodies
Applications:	WB
Recommended Dilution:	WB 1:500 - 1:2000
Reactivity:	Human, Mouse
Host:	Rabbit
Isotype:	IgG
Clonality:	Polyclonal
Immunogen:	Recombinant protein of human CHRNB1
Formulation:	Store at -20°C (regular) and -80°C (long term). Avoid freeze / thaw cycles. Buffer: PBS with 0.02% sodium azide, 50% glycerol, pH7.3.
Concentration:	lot specific
Purification:	Affinity purification
Conjugation:	Unconjugated
Storage:	Store at -20°C as received.
Stability:	Stable for 12 months from date of receipt.
Predicted Protein Size:	501
Gene Name:	cholinergic receptor nicotinic beta 1 subunit
Database Link:	<a href="#">NP_000738</a> <a href="#">Entrez Gene 11443 Mouse</a> <a href="#">Entrez Gene 1140 Human</a> <a href="#">P11230</a>
Background:	The muscle acetylcholine receptor is composed of five subunits: two alpha subunits and one beta, one gamma, and one delta subunit. This gene encodes the beta subunit of the acetylcholine receptor. The acetylcholine receptor changes conformation upon acetylcholine binding leading to the opening of an ion-conducting channel across the plasma membrane. Mutations in this gene are associated with slow-channel congenital myasthenic syndrome.
Synonyms:	ACHRB; CHRNB; CMS1D; CMS2A; CMS2C; SCCMS
Protein Families:	Druggable Genome, Ion Channels: Cys-loop Receptors, Transmembrane



[View online »](#)

**Product images:**

Western blot analysis of extracts of various cell lines, using CHRNA1 antibody.