

Product datasheet for **TA332587S**

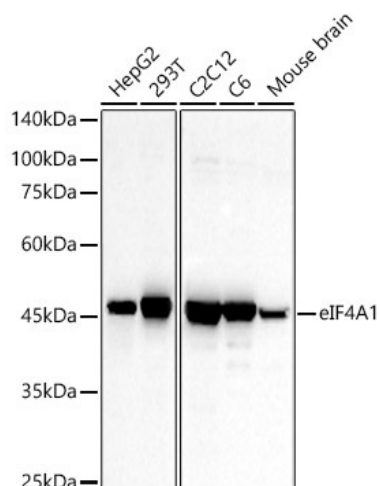
EIF4A1 Rabbit Polyclonal Antibody

Product data:

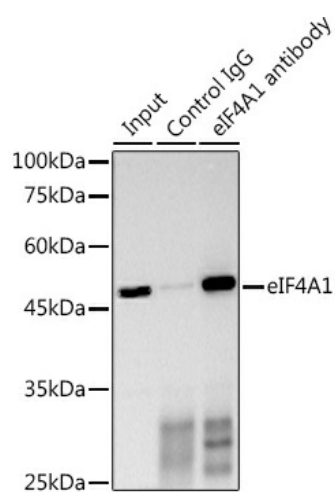
Product Type:	Primary Antibodies
Applications:	ELISA, ICC/IF, IP, WB
Recommended Dilution:	WB, 1:1000 - 1:5000 IF/ICC, 1:50 - 1:200 IP, 0.5µg-4µg antibody for 200µg-400µg extracts of whole cells ELISA, Recommended starting concentration is 1 µg/mL. Please optimize the concentration based on your specific assay requirements.
Reactivity:	Human, Mouse, Rat
Host:	Rabbit
Isotype:	IgG
Clonality:	Polyclonal
Formulation:	PBS with 0.05% proclin300, 50% glycerol, pH7.3.
Concentration:	lot specific
Purification:	Affinity purification
Conjugation:	Unconjugated
Storage:	Store at -20°C. Avoid freeze / thaw cycles.
Stability:	Stable for 12 months from date of receipt.
Predicted Protein Size:	46kDa
Gene Name:	eukaryotic translation initiation factor 4A1
Database Link:	NP_001407 Entrez Gene 13681 Mouse Entrez Gene 287436 Rat Entrez Gene 1973 Human P60842
Background:	Enables double-stranded RNA binding activity. Predicted to be involved in cytoplasmic translational initiation. Located in cytoplasm.
Synonyms:	DDX2A; EIF-4A; eIF-4A-I; EIF4A; eIF4A-I



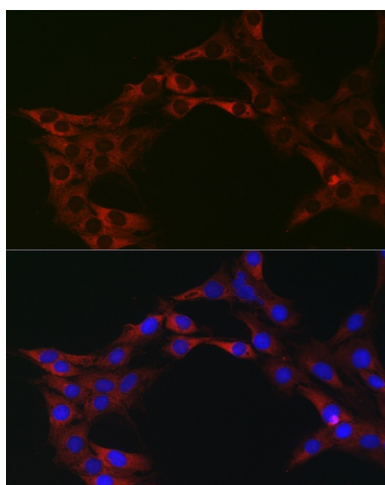
[View online »](#)

Product images:


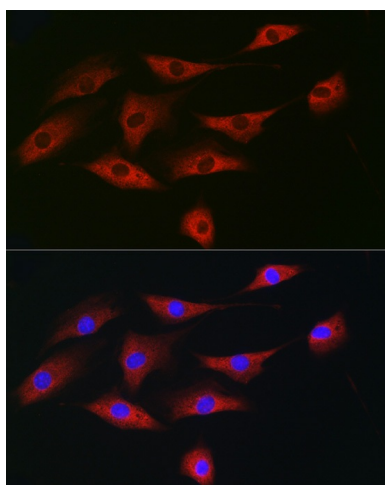
Western blot analysis of various lysates



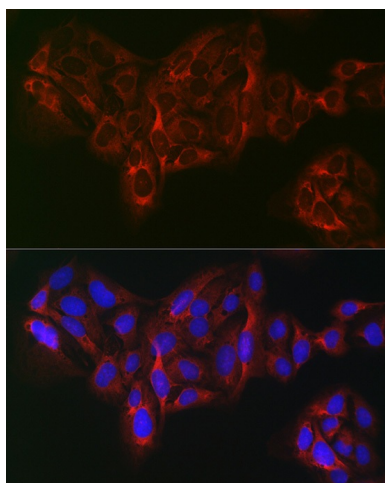
Immunoprecipitation analysis of 300 µg extracts of HeLa cells using 3 µg eIF4A1 antibody ([TA332587]). Western blot was performed from the immunoprecipitate using eIF4A1 antibody ([TA332587]) at a dilution of 1:1000.



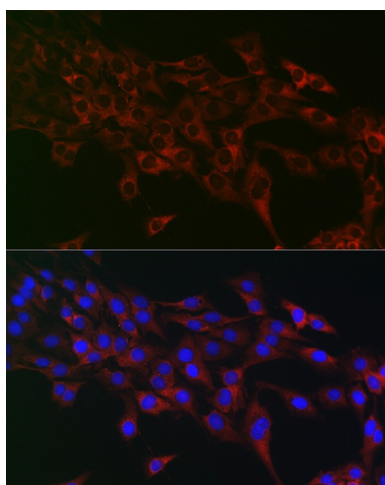
Immunofluorescence analysis of C6 cells using eIF4A1 Rabbit pAb ([TA332587]) at dilution of 1:100 (40x lens). Secondary antibody: Cy3-conjugated Goat anti-Rabbit IgG (H+L) (AS007) at 1:500 dilution. Blue: DAPI for nuclear staining.



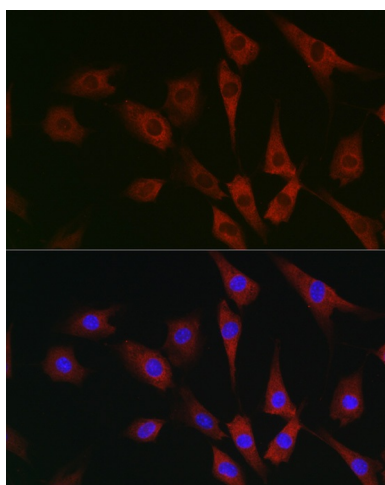
Immunofluorescence analysis of NIH/3T3 cells using eIF4A1 Rabbit pAb ([TA332587]) at dilution of 1:100 (40x lens). Secondary antibody: Cy3-conjugated Goat anti-Rabbit IgG (H+L) (AS007) at 1:500 dilution. Blue: DAPI for nuclear staining.



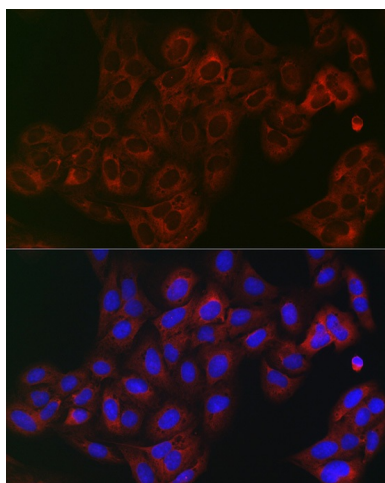
Immunofluorescence analysis of U2OS cells using eIF4A1 Rabbit pAb ([TA332587]) at dilution of 1:100 (40x lens). Secondary antibody: Cy3-conjugated Goat anti-Rabbit IgG (H+L) (AS007) at 1:500 dilution. Blue: DAPI for nuclear staining.



Immunofluorescence analysis of C6 cells using eIF4A1 Rabbit pAb ([TA332587]) at dilution of 1:100 (40x lens). Secondary antibody: Cy3-conjugated Goat anti-Rabbit IgG (H+L) (AS007) at 1:500 dilution. Blue: DAPI for nuclear staining.



Immunofluorescence analysis of NIH/3T3 cells using eIF4A1 Rabbit pAb ([TA332587]) at dilution of 1:100 (40x lens). Secondary antibody: Cy3-conjugated Goat anti-Rabbit IgG (H+L) (AS007) at 1:500 dilution. Blue: DAPI for nuclear staining.



Immunofluorescence analysis of U2OS cells using eIF4A1 Rabbit pAb ([TA332587]) at dilution of 1:100 (40x lens). Secondary antibody: Cy3-conjugated Goat anti-Rabbit IgG (H+L) (AS007) at 1:500 dilution. Blue: DAPI for nuclear staining.