

## Product datasheet for **TA332587**

### EIF4A1 Rabbit Polyclonal Antibody

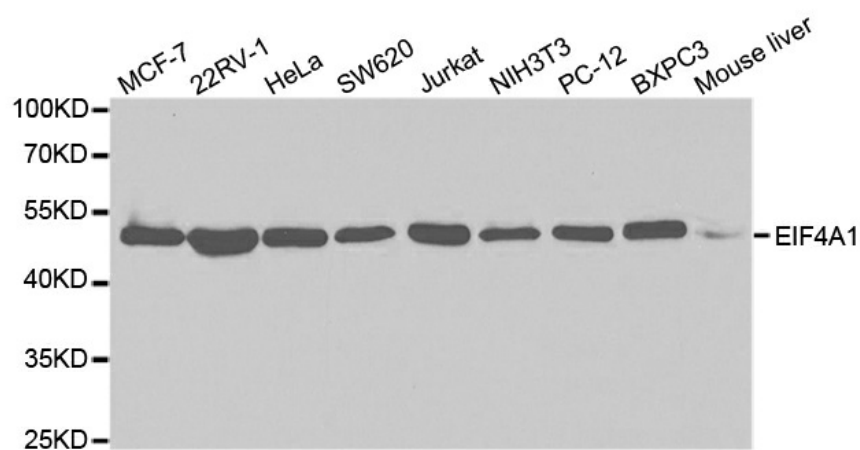
#### Product data:

Product Type:	Primary Antibodies
Applications:	ICC/IF, IP, WB
Recommended Dilution:	WB 1:500 - 1:2000;IF 1:50 - 1:200
Reactivity:	Human, Mouse, Rat
Host:	Rabbit
Isotype:	IgG
Clonality:	Polyclonal
Immunogen:	Recombinant protein of human EIF4A1
Formulation:	Store at -20°C (regular) and -80°C (long term). Avoid freeze / thaw cycles. Buffer: PBS with 0.02% sodium azide, 50% glycerol, pH7.3.
Concentration:	lot specific
Purification:	Affinity purification
Conjugation:	Unconjugated
Storage:	Store at -20°C as received.
Stability:	Stable for 12 months from date of receipt.
Predicted Protein Size:	46 kDa
Gene Name:	eukaryotic translation initiation factor 4A1
Database Link:	<a href="#">NP_001407</a> <a href="#">Entrez Gene 13681 MouseEntrez Gene 287436 RatEntrez Gene 1973 Human P60842</a>
Background:	EIF4A1 is an ATP-dependent RNA helicase which is a subunit of the eIF4F complex involved in cap recognition and is required for mRNA binding to ribosome. In the current model of translation initiation, eIF4A unwinds RNA secondary structures in the 5'-UTR of mRNAs which is necessary to allow efficient binding of the small ribosomal subunit, and subsequent scanning for the initiator codon.
Synonyms:	DDX2A; EIF-4A; eIF-4A-I; EIF4A; eIF4A-I

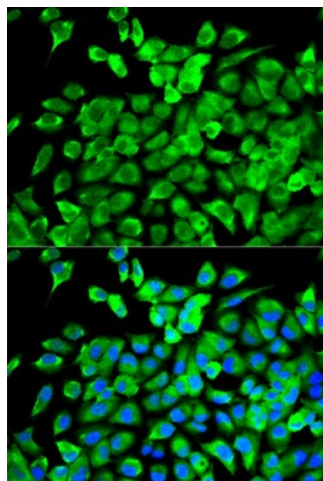


[View online »](#)

## Product images:



Western blot analysis of extracts of various cell lines, using EIF4A1 antibody.



Immunofluorescence analysis of MCF-7 cell using EIF4A1 antibody. Blue: DAPI for nuclear staining.