

Product datasheet for **TA332583S**

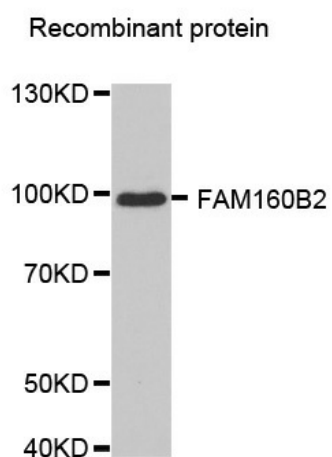
RAI16 (FAM160B2) Rabbit Polyclonal Antibody

Product data:

Product Type:	Primary Antibodies
Applications:	WB
Recommended Dilution:	WB 1:500 - 1:2000
Reactivity:	Human, Mouse, Rat
Host:	Rabbit
Isotype:	IgG
Clonality:	Polyclonal
Immunogen:	Recombinant protein of human FAM160B2
Formulation:	Store at -20°C (regular) and -80°C (long term). Avoid freeze / thaw cycles. Buffer: PBS with 0.02% sodium azide, 50% glycerol, pH7.3.
Concentration:	lot specific
Purification:	Affinity purification
Conjugation:	Unconjugated
Storage:	Store at -20°C as received.
Stability:	Stable for 12 months from date of receipt.
Predicted Protein Size:	743
Gene Name:	family with sequence similarity 160 member B2
Database Link:	NP_073586 Entrez Gene 239170 MouseEntrez Gene 306015 RatEntrez Gene 64760 Human Q86V87
Background:	FAM160B2, also named as RAI16, may play a role in early lens development in mammals and in upregulation of genes in CD34+ cells in coronary artery disease patients.
Synonyms:	RAI16



[View online »](#)

Product images:

Western blot analysis of extracts of recombinant protein, using FAM160B2 antibody.