

## Product datasheet for **TA332582S**

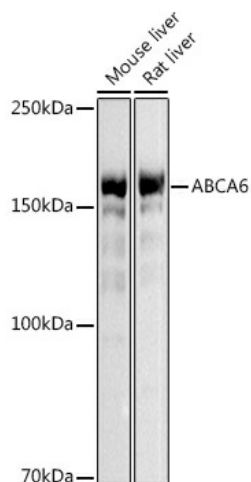
### Abca6 Rabbit Polyclonal Antibody

#### Product data:

Product Type:	Primary Antibodies
Applications:	ELISA, ICC/IF, WB
Recommended Dilution:	WB, 1:500 - 1:1000 IF/ICC, 1:50 - 1:200 ELISA, Recommended starting concentration is 1 µg/mL. Please optimize the concentration based on your specific assay requirements.
Reactivity:	Human, Mouse, Rat
Host:	Rabbit
Isotype:	IgG
Clonality:	Polyclonal
Formulation:	Store at -20°C (regular) and -80°C (long term). Avoid freeze / thaw cycles. Buffer: PBS with 0.02% sodium azide, 50% glycerol, pH7.3.
Concentration:	lot specific
Purification:	Affinity purification
Conjugation:	Unconjugated
Storage:	Store at -20°C. Avoid freeze / thaw cycles.
Stability:	Stable for 12 months from date of receipt.
Predicted Protein Size:	44kDa/183kDa
Gene Name:	ATP-binding cassette, sub-family A (ABC1), member 6
Database Link:	<a href="#">NP_671751</a> <a href="#">Entrez Gene 23460 Human</a> <a href="#">Entrez Gene 303639 Rat</a> <a href="#">Entrez Gene 76184 Mouse</a> <a href="#">Q8K441</a>
Background:	Predicted to enable ATPase-coupled transmembrane transporter activity and lipid transporter activity. Predicted to be involved in lipid transport. Predicted to be located in Golgi membrane; nucleoplasm; and plasma membrane. Predicted to be active in intracellular membrane-bounded organelle. Is expressed in tail. Orthologous to human ABCA6 (ATP binding cassette subfamily A member 6).
Synonyms:	EST155051; FLJ43498



[View online »](#)

**Product images:**

Western blot analysis of various lysates using ([TA332582]) at 1:500 dilution.

Secondary antibody: HRP-conjugated Goat anti-Rabbit IgG (H+L) (AS014) at 1:10000 dilution.

Lysates/proteins: 25µg per lane.

Blocking buffer: 3% nonfat dry milk in TBST.

Detection: ECL Basic Kit (RM00020).

Exposure time: 3s.