

Product datasheet for **TA332581S**

NLK Rabbit Polyclonal Antibody

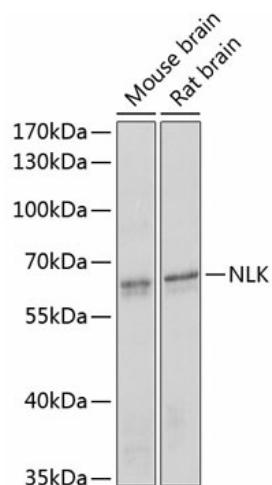
Product data:

Product Type:	Primary Antibodies
Applications:	ELISA, IHC, WB
Recommended Dilution:	WB, 1:500 - 1:2000 IHC-P, 1:50 - 1:200 ELISA, Recommended starting concentration is 1 µg/mL. Please optimize the concentration based on your specific assay requirements.
Reactivity:	Human, Mouse, Rat
Host:	Rabbit
Isotype:	IgG
Clonality:	Polyclonal
Formulation:	Store at -20°C (regular) and -80°C (long term). Avoid freeze / thaw cycles. Buffer: PBS with 0.02% sodium azide, 50% glycerol, pH7.3.
Concentration:	lot specific
Purification:	Affinity purification
Conjugation:	Unconjugated
Storage:	Store at -20°C. Avoid freeze / thaw cycles.
Stability:	Stable for 12 months from date of receipt.
Predicted Protein Size:	58kDa
Gene Name:	nemo like kinase
Database Link:	NP_057315 Entrez Gene 18099 Mouse Entrez Gene 497961 Rat Entrez Gene 51701 Human Q9UBE8
Background:	Enables ubiquitin protein ligase binding activity. Involved in protein stabilization and transforming growth factor beta receptor signaling pathway. Predicted to be located in cytosol and nucleoplasm. Predicted to be active in cytoplasm and nucleus.
Synonyms:	DKFZp761G1211; FLJ21033
Protein Families:	Druggable Genome, Protein Kinase, Transcription Factors

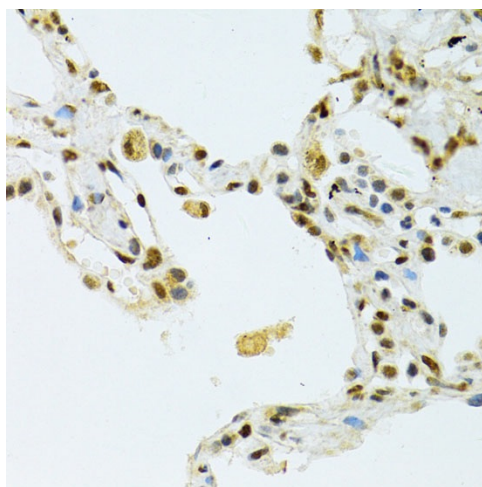

[View online »](#)

Protein Pathways: Adherens junction, MAPK signaling pathway, Wnt signaling pathway

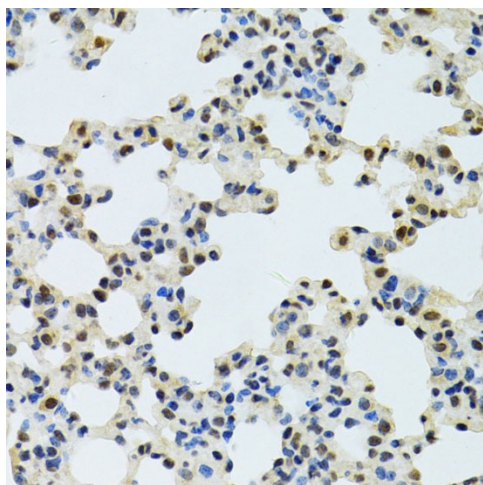
Product images:



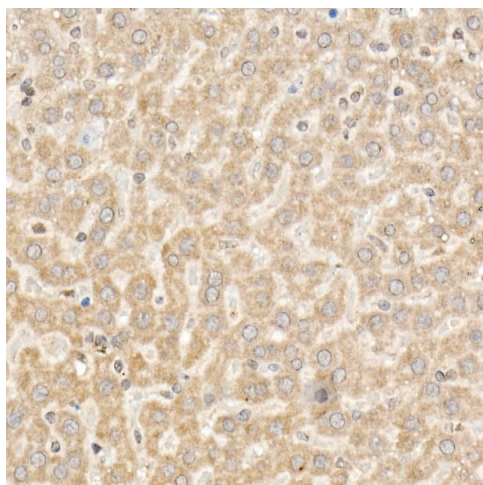
Western blot analysis of various lysates using NLK Rabbit pAb ([TA332581]) at 1:1000 dilution.
Secondary antibody: HRP-conjugated Goat anti-Rabbit IgG (H+L) (AS014) at 1:10000 dilution.
Lysates/proteins: 25µg per lane.
Blocking buffer: 3% nonfat dry milk in TBST.
Detection: ECL Enhanced Kit (RM00021).
Exposure time: 90s.



Immunohistochemistry analysis of paraffin-embedded Human liver cancer using NLK Rabbit pAb ([TA332581]) at dilution of 1:20 (40x lens).
High pressure antigen retrieval performed with 0.01M Citrate Bufferr (pH 6.0) prior to IHC staining.



Immunohistochemistry analysis of paraffin-embedded Mouse kidney using NLK Rabbit pAb ([TA332581]) at dilution of 1:20 (40x lens). High pressure antigen retrieval performed with 0.01M Citrate Bufferr (pH 6.0) prior to IHC staining.



Immunohistochemistry analysis of paraffin-embedded Rat liver using NLK Rabbit pAb ([TA332581]) at dilution of 1:20 (40x lens). High pressure antigen retrieval performed with 0.01M Citrate Bufferr (pH 6.0) prior to IHC staining.