

Product datasheet for **TA332581**

NLK Rabbit Polyclonal Antibody

Product data:

Product Type:	Primary Antibodies
Applications:	IHC, WB
Recommended Dilution:	WB 1:500 - 1:2000
Reactivity:	Human, Mouse, Rat
Host:	Rabbit
Isotype:	IgG
Clonality:	Polyclonal
Immunogen:	Recombinant protein of human NLK
Formulation:	Store at -20°C (regular) and -80°C (long term). Avoid freeze / thaw cycles. Buffer: PBS with 0.02% sodium azide, 50% glycerol, pH7.3.
Concentration:	lot specific
Purification:	Affinity purification
Conjugation:	Unconjugated
Storage:	Store at -20°C as received.
Stability:	Stable for 12 months from date of receipt.
Predicted Protein Size:	527
Gene Name:	nemo like kinase
Database Link:	NP_057315 Entrez Gene 18099 MouseEntrez Gene 497961 RatEntrez Gene 51701 Human Q9UBE8



[View online »](#)

Background:

The activation of signal transduction pathways by growth factors, hormones and neurotransmitters is mediated through two closely related MAP kinases, p44 and p42, designated extracellular-signal related kinase 1 (ERK 1) and ERK 2, respectively. ERK proteins are regulated by dual phosphorylation at specific tyrosine and threonine sites mapping within a characteristic Thr-Glu-Tyr motif. Phosphorylation at both Thr-183 and Tyr-185 is required for full enzymatic activation. In response to activation, MAP kinases phosphorylate downstream components on serine and threonine (5,6). Nlk, or nemo-like kinase, is a murine homolog of the *Drosophila* nemo (nmo) gene. Nlk and Nmo have sequence homology to both the ERK MAP kinases and the cyclin dependent kinases. Nlk is a nuclear protein with the ability to autophosphorylate.

Synonyms:

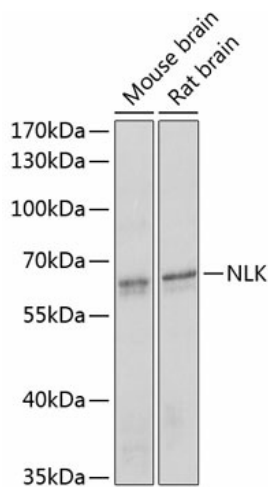
DKFZp761G1211; FLJ21033

Protein Families:

Druggable Genome, Protein Kinase, Transcription Factors

Protein Pathways:

Adherens junction, MAPK signaling pathway, Wnt signaling pathway

Product images:

Western blot analysis of extracts of various cell lines, using NLK antibody (TA332581) at 1:1000 dilution. | Secondary antibody: HRP Goat Anti-Rabbit IgG (H+L) at 1:10000 dilution. | Lysates/proteins: 25ug per lane. | Blocking buffer: 3% nonfat dry milk in TBST. | Detection: ECL Enhanced Kit. | Exposure time: 90s.