

Product datasheet for **TA332580**

PELP1 Rabbit Polyclonal Antibody

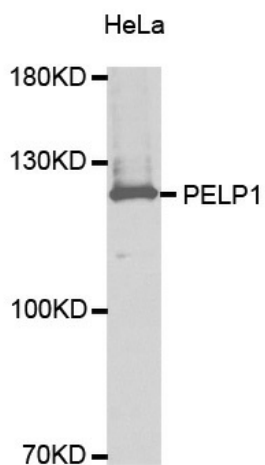
Product data:

Product Type:	Primary Antibodies
Applications:	ICC/IF, IHC, WB
Recommended Dilution:	WB 1:500 - 1:2000
Reactivity:	Human, Mouse, Rat
Host:	Rabbit
Isotype:	IgG
Clonality:	Polyclonal
Immunogen:	Recombinant protein of human PELP1
Formulation:	Store at -20°C (regular) and -80°C (long term). Avoid freeze / thaw cycles. Buffer: PBS with 0.02% sodium azide, 50% glycerol, pH7.3.
Concentration:	lot specific
Purification:	Affinity purification
Conjugation:	Unconjugated
Storage:	Store at -20°C as received.
Stability:	Stable for 12 months from date of receipt.
Predicted Protein Size:	1130
Gene Name:	proline, glutamate and leucine rich protein 1
Database Link:	NP_055204 Entrez Gene 75273 MouseEntrez Gene 360552 RatEntrez Gene 27043 Human Q8IZL8
Background:	This gene encodes a transcription factor which coactivates transcription of estrogen receptor responsive genes and corepresses genes activated by other hormone receptors or sequence-specific transcription factors. Expression of this gene is regulated by both members of the estrogen receptor family. This gene may be involved in the progression of several types of cancer. Alternative splicing results in multiple transcript variants.
Synonyms:	MNAR; P160
Protein Families:	Druggable Genome, Stem cell - Pluripotency



[View online »](#)

Product images:



Western blot analysis of extracts of HeLa cell line, using PELP1 antibody.