

## Product datasheet for **TA332576**

### CCL28 Rabbit Polyclonal Antibody

#### Product data:

Product Type:	Primary Antibodies
Applications:	WB
Recommended Dilution:	WB 1:500 - 1:2000
Reactivity:	Human, Mouse, Rat
Host:	Rabbit
Isotype:	IgG
Clonality:	Polyclonal
Immunogen:	Recombinant protein of human CCL28
Formulation:	PBS with 0.05% proclin300,50% glycerol,pH7.3.
Concentration:	lot specific
Purification:	Affinity purification
Conjugation:	Unconjugated
Storage:	Store at -20°C as received.
Stability:	Stable for 12 months from date of receipt.
Predicted Protein Size:	127
Gene Name:	C-C motif chemokine ligand 28
Database Link:	<a href="#">NP_683513</a> <a href="#">Entrez Gene 56838 MouseEntrez Gene 114492 RatEntrez Gene 56477 Human Q9NRJ3</a>

**Background:** This gene belongs to the subfamily of small cytokine CC genes. Cytokines are a family of secreted proteins involved in immunoregulatory and inflammatory processes. The CC cytokines are proteins characterized by two adjacent cysteines. The cytokine encoded by this gene displays chemotactic activity for resting CD4 or CD8 T cells and eosinophils. The product of this gene binds to chemokine receptors CCR3 and CCR10. This chemokine may play a role in the physiology of extracutaneous epithelial tissues, including diverse mucosal organs.

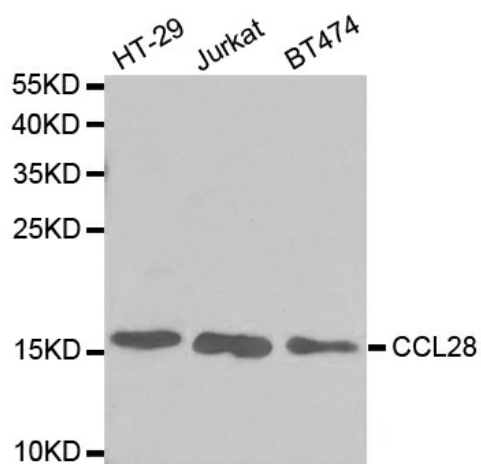
**Synonyms:** CCK1; MEC; SCYA28  
**Protein Families:** Druggable Genome, Secreted Protein



[View online »](#)

Protein Pathways: Chemokine signaling pathway, Cytokine-cytokine receptor interaction

**Product images:**



Western blot analysis of extracts of various cell lines, using CCL28 antibody.