

## Product datasheet for **TA332572**

### CEACAM3 Rabbit Polyclonal Antibody

#### Product data:

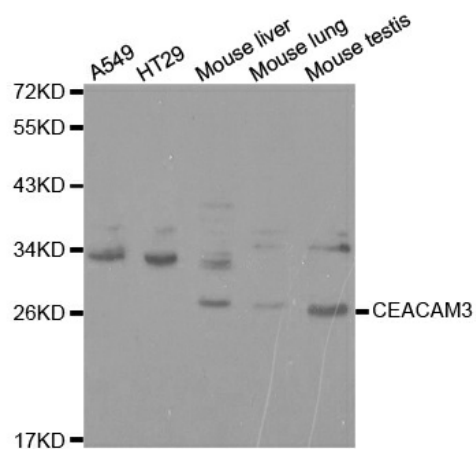
Product Type:	Primary Antibodies
Applications:	WB
Recommended Dilution:	WB 1:500 - 1:2000
Reactivity:	Human, Mouse
Host:	Rabbit
Isotype:	IgG
Clonality:	Polyclonal
Immunogen:	Recombinant protein of human CEACAM3
Formulation:	Store at -20°C (regular) and -80°C (long term). Avoid freeze / thaw cycles. Buffer: PBS with 0.02% sodium azide, 50% glycerol, pH7.3.
Concentration:	lot specific
Purification:	Affinity purification
Conjugation:	Unconjugated
Storage:	Store at -20°C as received.
Stability:	Stable for 12 months from date of receipt.
Predicted Protein Size:	252
Gene Name:	carcinoembryonic antigen related cell adhesion molecule 3
Database Link:	<a href="#">NP_001806</a> <a href="#">Entrez Gene 384557 Mouse</a> <a href="#">Entrez Gene 1084 Human</a> <a href="#">P40198</a>
Background:	This gene encodes a member of the family of carcinoembryonic antigen-related cell adhesion molecules (CEACAMs), which are used by several bacterial pathogens to bind and invade host cells. The encoded transmembrane protein directs phagocytosis of several bacterial species that is dependent on the small GTPase Rac. It is thought to serve an important role in controlling human-specific pathogens by the innate immune system. Alternatively spliced transcript variants have been described.
Synonyms:	CD66D; CEA; CGM1; W264; W282



[View online »](#)

Protein Families: Transmembrane

### Product images:



Western blot analysis of extracts of various cell lines, using CEACAM3 antibody.