

## Product datasheet for **TA332568**

### Prion protein PrP (PRNP) Rabbit Polyclonal Antibody

#### Product data:

Product Type:	Primary Antibodies
Applications:	IHC, WB
Recommended Dilution:	WB 1:500 - 1:2000;IHC 1:50- 1:200
Reactivity:	Human, Mouse, Rat
Host:	Rabbit
Isotype:	IgG
Clonality:	Polyclonal
Immunogen:	Recombinant protein of human PRNP
Formulation:	Store at -20°C (regular) and -80°C (long term). Avoid freeze / thaw cycles. Buffer: PBS with 0.02% sodium azide, 50% glycerol, pH7.3.
Concentration:	lot specific
Purification:	Affinity purification
Conjugation:	Unconjugated
Storage:	Store at -20°C as received.
Stability:	Stable for 12 months from date of receipt.
Predicted Protein Size:	253
Gene Name:	prion protein
Database Link:	<a href="#">NP_898902</a> <a href="#">Entrez Gene 19122 Mouse</a> <a href="#">Entrez Gene 24686 Rat</a> <a href="#">Entrez Gene 5621 Human</a> <a href="#">F7VJQ1</a>



[View online »](#)

**Background:**

The protein encoded by this gene is a membrane glycosylphosphatidylinositol-anchored glycoprotein that tends to aggregate into rod-like structures. The encoded protein contains a highly unstable region of five tandem octapeptide repeats. This gene is found on chromosome 20, approximately 20 kbp upstream of a gene which encodes a biochemically and structurally similar protein to the one encoded by this gene. Mutations in the repeat region as well as elsewhere in this gene have been associated with Creutzfeldt-Jakob disease, fatal familial insomnia, Gerstmann-Straussler disease, Huntington disease-like 1, and kuru. An overlapping open reading frame has been found for this gene that encodes a smaller, structurally unrelated protein, AltPrp. Alternative splicing results in multiple transcript variants.

**Synonyms:**

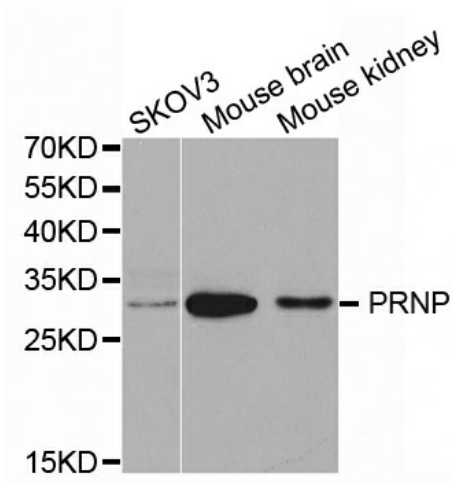
AltPrP; ASCR; CD230; CJD; GSS; KURU; p27-30; PRIP; PrP; PrP27-30; PrP33-35C; PrPc

**Protein Families:**

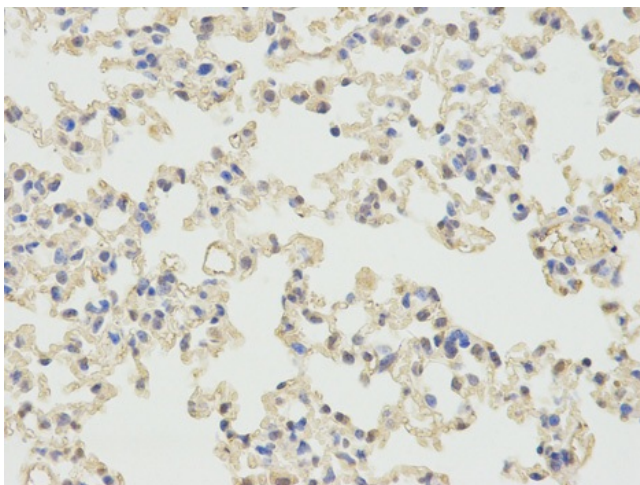
ES Cell Differentiation/IPS, Stem cell - Pluripotency, Transmembrane

**Protein Pathways:**

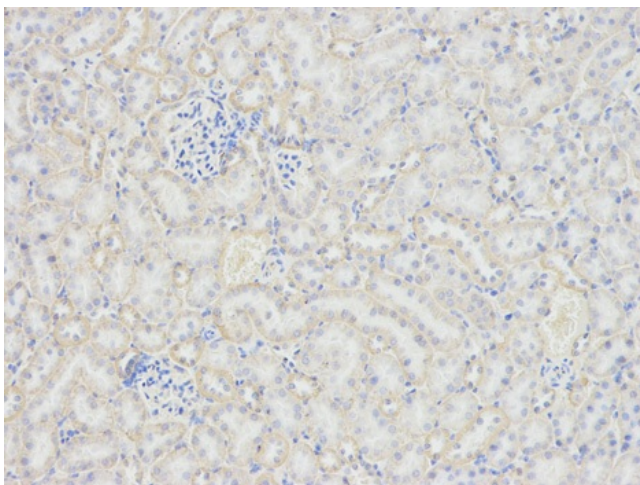
Prion diseases

**Product images:**

Western blot analysis of extracts of various cell lines, using PRNP antibody.



Immunohistochemical of paraffin-embedded mouse lung using PRNP antibody at dilution of 1:100 (400x lens).



Immunohistochemical of paraffin-embedded mouse kidney using PRNP antibody at dilution of 1:100 (400x lens).