

Product datasheet for **TA332567**

LAMP1 Rabbit Polyclonal Antibody

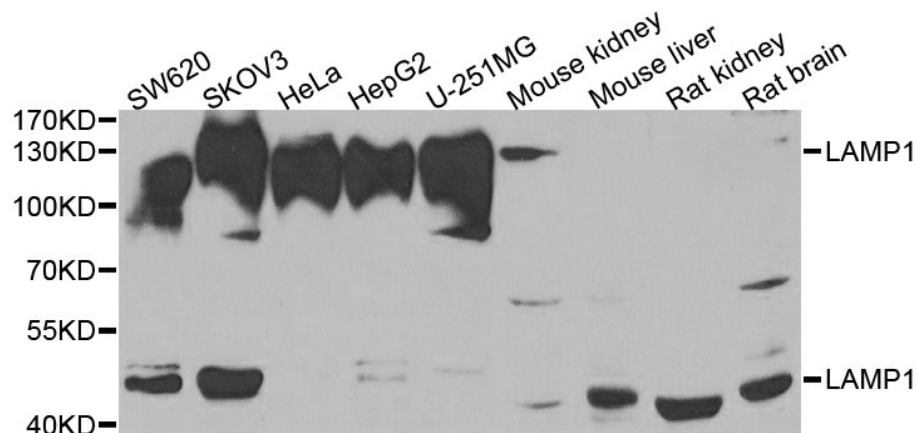
Product data:

Product Type:	Primary Antibodies
Applications:	IF, IHC, WB
Recommended Dilution:	WB 1:500 - 1:2000;IHC 1:50 - 1:200
Reactivity:	Human, Mouse, Rat
Host:	Rabbit
Isotype:	IgG
Clonality:	Polyclonal
Immunogen:	Recombinant protein of human LAMP1
Formulation:	Store at -20°C (regular) and -80°C (long term). Avoid freeze / thaw cycles. Buffer: PBS with 0.02% sodium azide, 50% glycerol, pH7.3.
Concentration:	lot specific
Purification:	Affinity purification
Conjugation:	Unconjugated
Storage:	Store at -20°C as received.
Stability:	Stable for 12 months from date of receipt.
Predicted Protein Size:	44 kDa
Gene Name:	lysosomal associated membrane protein 1
Database Link:	NP_005552 Entrez Gene 16783 Mouse Entrez Gene 25328 Rat Entrez Gene 3916 Human P11279
Background:	The protein encoded by this gene is a member of a family of membrane glycoproteins. This glycoprotein provides selectins with carbohydrate ligands. It may also play a role in tumor cell metastasis.
Synonyms:	CD107a; LAMPA; LGP120
Protein Families:	ES Cell Differentiation/IPS, Transmembrane
Protein Pathways:	Lysosome

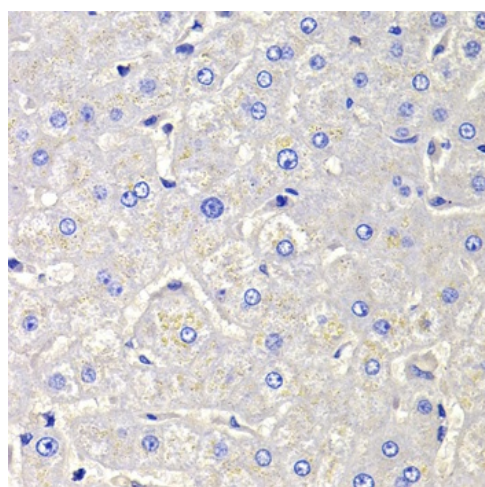


[View online »](#)

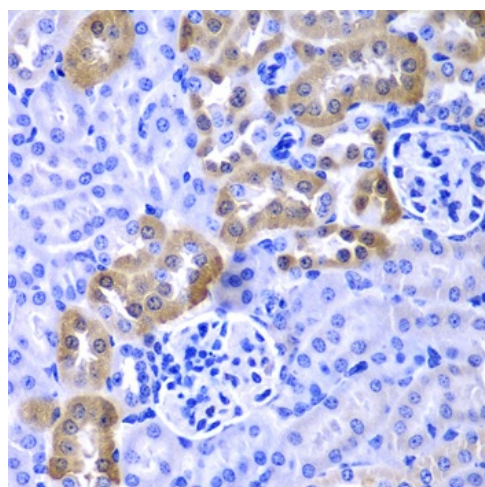
Product images:



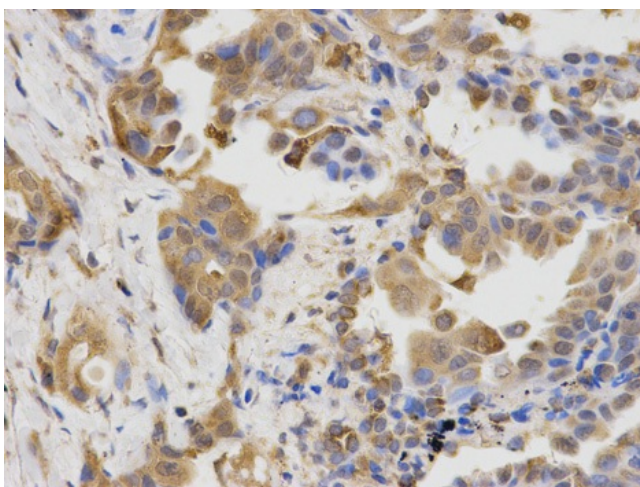
Western blot analysis of extracts of various cell lines, using LAMP1 antibody.



Immunohistochemistry of paraffin-embedded human liver cancer using LAMP1 antibody at dilution of 1:100 (x400 lens).



Immunohistochemistry of paraffin-embedded mouse kidney using LAMP1 antibody at dilution of 1:100 (400x lens).



Immunohistochemical of paraffin-embedded human lung cancer using LAMP1 antibody at dilution of 1:100 (400x lens)