

## Product datasheet for **TA332565**

### Triosephosphate isomerase (TPI1) Rabbit Polyclonal Antibody

#### Product data:

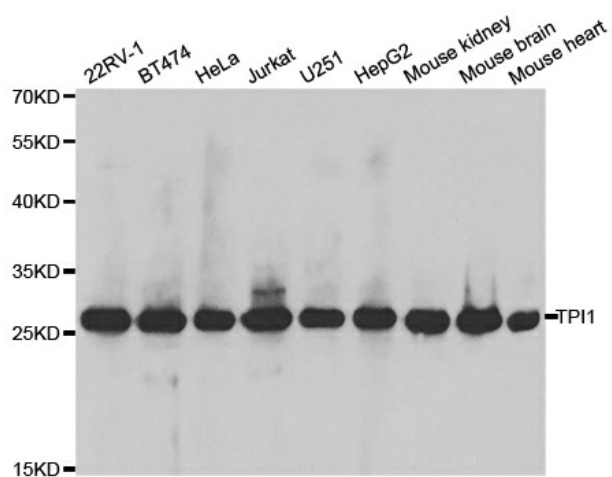
Product Type:	Primary Antibodies
Applications:	WB
Recommended Dilution:	WB 1:500 - 1:2000
Reactivity:	Human, Mouse, Rat
Host:	Rabbit
Isotype:	IgG
Clonality:	Polyclonal
Immunogen:	Recombinant protein of human TPI1
Formulation:	Store at -20°C (regular) and -80°C (long term). Avoid freeze / thaw cycles. Buffer: PBS with 0.02% sodium azide, 50% glycerol, pH7.3.
Concentration:	lot specific
Purification:	Affinity purification
Conjugation:	Unconjugated
Storage:	Store at -20°C as received.
Stability:	Stable for 12 months from date of receipt.
Predicted Protein Size:	249
Gene Name:	triosephosphate isomerase 1
Database Link:	<a href="#">NP_000356</a> <a href="#">Entrez Gene 21991 Mouse</a> <a href="#">Entrez Gene 24849 Rat</a> <a href="#">Entrez Gene 7167 Human</a> <a href="#">P60174</a>
Background:	This gene encodes an enzyme, consisting of two identical proteins, which catalyzes the isomerization of glyceraldehydes 3-phosphate (G3P) and dihydroxy-acetone phosphate (DHAP) in glycolysis and gluconeogenesis. Mutations in this gene are associated with triosephosphate isomerase deficiency. Pseudogenes have been identified on chromosomes 1, 4, 6 and 7. Alternative splicing results in multiple transcript variants.
Synonyms:	HEL-S-49; TIM; TPI; TPID



[View online »](#)

**Protein Pathways:** Fructose and mannose metabolism, Glycolysis / Gluconeogenesis, Inositol phosphate metabolism, Metabolic pathways

**Product images:**



Western blot analysis of extracts of various cell lines, using TPI1 antibody.