

## Product datasheet for **TA332561**

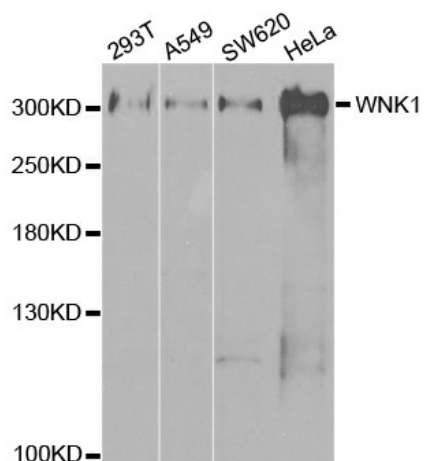
### WNK1 Rabbit Polyclonal Antibody

#### Product data:

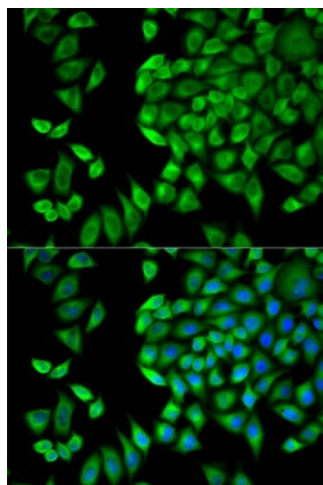
Product Type:	Primary Antibodies
Applications:	ICC/IF, WB
Recommended Dilution:	WB 1:500 - 1:2000;IF 1:50- 1:200
Reactivity:	Human
Host:	Rabbit
Isotype:	IgG
Clonality:	Polyclonal
Immunogen:	Recombinant protein of human WNK1
Formulation:	Store at -20°C (regular) and -80°C (long term). Avoid freeze / thaw cycles. Buffer: PBS with 0.02% sodium azide, 50% glycerol, pH7.3.
Concentration:	lot specific
Purification:	Affinity purification
Conjugation:	Unconjugated
Storage:	Store at -20°C as received.
Stability:	Stable for 12 months from date of receipt.
Gene Name:	WNK lysine deficient protein kinase 1
Database Link:	<a href="#">NP_061852</a> <a href="#">Entrez Gene 65125 Human</a> <a href="#">Q9H4A3</a>
Background:	This gene encodes a member of the WNK subfamily of serine/threonine protein kinases. The encoded protein may be a key regulator of blood pressure by controlling the transport of sodium and chloride ions. Mutations in this gene have been associated with pseudohypoaldosteronism type II and hereditary sensory neuropathy type II. Alternatively spliced transcript variants encoding different isoforms have been described but the full-length nature of all of them has yet to be determined.
Synonyms:	HSAN2; HSN2; KDP; p65; PPP1R167; PRKWNK1; PSK
Protein Families:	Druggable Genome, Protein Kinase



[View online »](#)

**Product images:**

Western blot analysis of extracts of various cell lines, using WNK1 antibody.



Immunofluorescence analysis of HeLa cell using WNK1 antibody. Blue: DAPI for nuclear staining.