

Product datasheet for **TA332560S**

AIF (AIFM1) Rabbit Polyclonal Antibody

Product data:

Product Type:	Primary Antibodies
Applications:	ICC/IF, IHC, IP, WB
Recommended Dilution:	WB 1:500 - 1:2000;IF 1:50 - 1:200;IP 1:20 - 1:50
Reactivity:	Human, Mouse, Rat
Host:	Rabbit
Isotype:	IgG
Clonality:	Polyclonal
Immunogen:	Recombinant protein of human AIFM1
Formulation:	Store at -20°C (regular) and -80°C (long term). Avoid freeze / thaw cycles. Buffer: PBS with 0.02% sodium azide, 50% glycerol, pH7.3.
Concentration:	lot specific
Purification:	Affinity purification
Conjugation:	Unconjugated
Storage:	Store at -20°C as received.
Stability:	Stable for 12 months from date of receipt.
Predicted Protein Size:	66 kDa
Gene Name:	apoptosis inducing factor, mitochondria associated 1
Database Link:	NP_665811 Entrez Gene 26926 Mouse Entrez Gene 83533 Rat Entrez Gene 9131 Human O95831

Background: This gene encodes a flavoprotein essential for nuclear disassembly in apoptotic cells, and it is found in the mitochondrial intermembrane space in healthy cells. Induction of apoptosis results in the translocation of this protein to the nucleus where it affects chromosome condensation and fragmentation. In addition, this gene product induces mitochondria to release the apoptogenic proteins cytochrome c and caspase-9. Mutations in this gene cause combined oxidative phosphorylation deficiency 6, which results in a severe mitochondrial encephalomyopathy. Alternative splicing results in multiple transcript variants. A related pseudogene has been identified on chromosome 10.



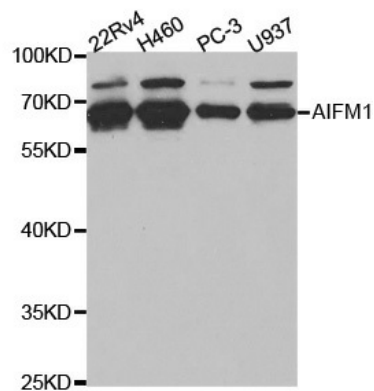
[View online »](#)

Synonyms: AIF; CMT2D; CMTX4; COWCK; COXPD6; NADMR; NAMSD; PDCD8

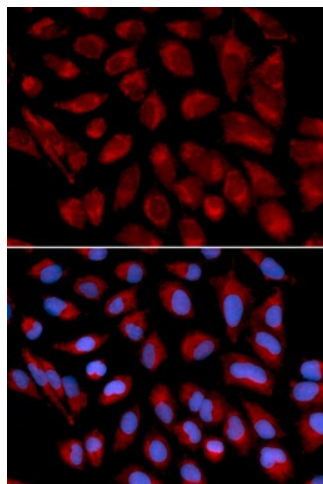
Protein Families: Druggable Genome, Transmembrane

Protein Pathways: Apoptosis

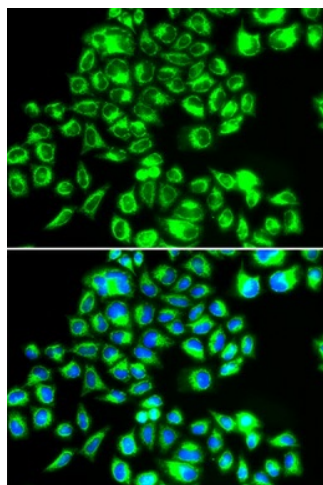
Product images:



Western blot analysis of extracts of various cell lines, using AIFM1 antibody.



Immunofluorescence analysis of U2OS cell using AIFM1 antibody. Blue: DAPI for nuclear staining.



Immunofluorescence analysis of HeLa cell using AIFM1 antibody. Blue: DAPI for nuclear staining.