

Product datasheet for **TA332556S**

DIABLO Rabbit Polyclonal Antibody

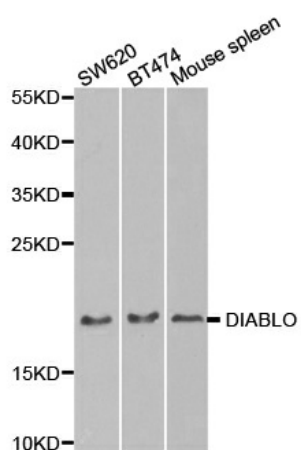
Product data:

Product Type:	Primary Antibodies
Applications:	IHC, IP, WB
Recommended Dilution:	WB 1:500 - 1:2000
Reactivity:	Human, Mouse, Rat
Host:	Rabbit
Isotype:	IgG
Clonality:	Polyclonal
Immunogen:	Recombinant protein of human DIABLO
Formulation:	PBS with 0.09% Sodium azide, 50% glycerol, pH 7.3.
Concentration:	lot specific
Purification:	Affinity purification
Conjugation:	Unconjugated
Storage:	Store at -20°C as received.
Stability:	Stable for 12 months from date of receipt.
Predicted Protein Size:	239
Gene Name:	diablo IAP-binding mitochondrial protein
Database Link:	NP_620308 Entrez Gene 66593 MouseEntrez Gene 288753 RatEntrez Gene 56616 Human Q9NR28
Background:	This gene encodes an inhibitor of apoptosis protein (IAP)-binding protein. The encoded mitochondrial protein enters the cytosol when cells undergo apoptosis, and allows activation of caspases by binding to inhibitor of apoptosis proteins. Overexpression of the encoded protein sensitizes tumor cells to apoptosis. A mutation in this gene is associated with young-adult onset of nonsyndromic deafness-64. Alternative splicing results in multiple transcript variants encoding different isoforms.
Synonyms:	DFNA64; SMAC
Protein Families:	Transmembrane



[View online »](#)

Product images:



Western blot analysis of extracts of various cell lines, using DIABLO antibody.