

Product datasheet for **TA332554**

RACK1 Rabbit Polyclonal Antibody

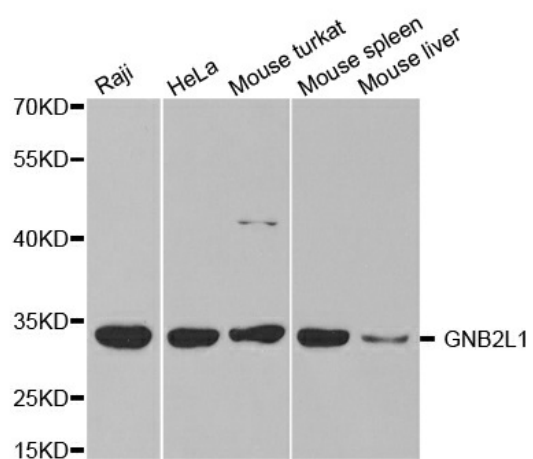
Product data:

Product Type:	Primary Antibodies
Applications:	IF, WB
Recommended Dilution:	WB 1:500 - 1:2000
Reactivity:	Human, Mouse, Rat
Host:	Rabbit
Isotype:	IgG
Clonality:	Polyclonal
Immunogen:	Recombinant protein of human GNB2L1
Formulation:	Store at -20°C (regular) and -80°C (long term). Avoid freeze / thaw cycles. Buffer: PBS with 0.02% sodium azide, 50% glycerol, pH7.3.
Concentration:	lot specific
Purification:	Affinity purification
Conjugation:	Unconjugated
Storage:	Store at -20°C as received.
Stability:	Stable for 12 months from date of receipt.
Predicted Protein Size:	317
Gene Name:	receptor for activated C kinase 1
Database Link:	NP_006089 Entrez Gene 14694 MouseEntrez Gene 83427 RatEntrez Gene 10399 Human P63244
Synonyms:	Gnb2-rs1; GNB2L1; H12.3; HLC-7; PIG21
Protein Families:	Druggable Genome



[View online »](#)

Product images:



Western blot analysis of extracts of various cell lines, using GNB2L1 antibody.