

Product datasheet for **TA332552**

Granzyme B (GZMB) Rabbit Polyclonal Antibody

Product data:

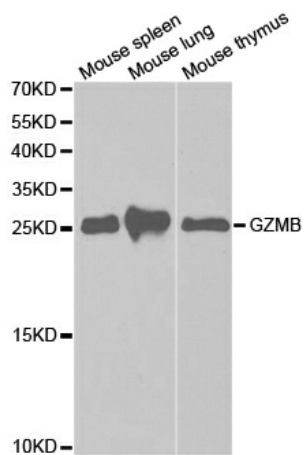
| | |
|-------------------------|--|
| Product Type: | Primary Antibodies |
| Applications: | ICC/IF, IHC, WB |
| Recommended Dilution: | WB 1:500 - 1:2000;IF 1:50- 1:200 |
| Reactivity: | Human, Mouse, Rat |
| Host: | Rabbit |
| Isotype: | IgG |
| Clonality: | Polyclonal |
| Immunogen: | Recombinant protein of human GZMB |
| Formulation: | Store at -20°C (regular) and -80°C (long term). Avoid freeze / thaw cycles. Buffer: PBS with 0.02% sodium azide, 50% glycerol, pH7.3. |
| Concentration: | lot specific |
| Purification: | Affinity purification |
| Conjugation: | Unconjugated |
| Storage: | Store at -20°C as received. |
| Stability: | Stable for 12 months from date of receipt. |
| Predicted Protein Size: | 247 |
| Gene Name: | granzyme B |
| Database Link: | NP_004122 Entrez Gene 14939 MouseEntrez Gene 171528 RatEntrez Gene 3002 Human P10144 |
| Background: | Cytolytic T lymphocytes (CTL) and natural killer (NK) cells share the remarkable ability to recognize, bind, and lyse specific target cells. They are thought to protect their host by lysing cells bearing on their surface 'nonself' antigens, usually peptides or proteins resulting from infection by intracellular pathogens. The protein encoded by this gene is crucial for the rapid induction of target cell apoptosis by CTL in cell-mediated immune response. |
| Synonyms: | C11; CCPI; CGL-1; CGL1; CSP-B; CSPB; CTLA1; CTSLG1; HLP; SECT |
| Protein Families: | Druggable Genome, Protease |



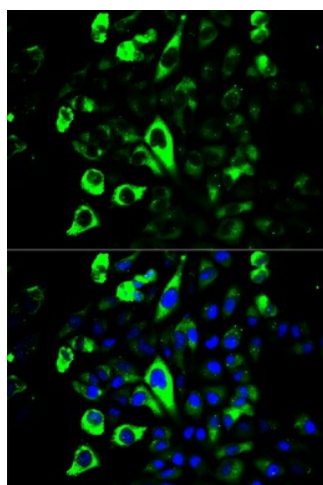
[View online »](#)

Protein Pathways:

Allograft rejection, Autoimmune thyroid disease, Graft-versus-host disease, Natural killer cell mediated cytotoxicity, Type I diabetes mellitus

Product images:


Western blot analysis of extracts of various cell lines, using GZMB antibody.



Immunofluorescence analysis of U2OS cell using GZMB antibody. Blue: DAPI for nuclear staining.