

## Product datasheet for **TA332551**

### MMP14 Rabbit Polyclonal Antibody

#### Product data:

Product Type:	Primary Antibodies
Applications:	ICC/IF, IHC, WB
Recommended Dilution:	WB 1:500 - 1:2000
Reactivity:	Human, Mouse, Rat
Host:	Rabbit
Isotype:	IgG
Clonality:	Polyclonal
Immunogen:	Recombinant protein of human MMP14
Formulation:	Store at -20°C (regular) and -80°C (long term). Avoid freeze / thaw cycles. Buffer: PBS with 0.02% sodium azide, 50% glycerol, pH7.3.
Concentration:	lot specific
Purification:	Affinity purification
Conjugation:	Unconjugated
Storage:	Store at -20°C as received.
Stability:	Stable for 12 months from date of receipt.
Predicted Protein Size:	582
Gene Name:	matrix metalloproteinase 14
Database Link:	<a href="#">NP_004986</a> <a href="#">Entrez Gene 17387 Mouse</a> <a href="#">Entrez Gene 81707 Rat</a> <a href="#">Entrez Gene 4323 Human</a> <a href="#">P50281</a>



[View online »](#)

**Background:**

Proteins of the matrix metalloproteinase (MMP) family are involved in the breakdown of extracellular matrix in normal physiological processes, such as embryonic development, reproduction, and tissue remodeling, as well as in disease processes, such as arthritis and metastasis. Most MMP's are secreted as inactive proproteins which are activated when cleaved by extracellular proteinases. However, the protein encoded by this gene is a member of the membrane-type MMP (MT-MMP) subfamily; each member of this subfamily contains a potential transmembrane domain suggesting that these proteins are expressed at the cell surface rather than secreted. This protein activates MMP2 protein, and this activity may be involved in tumor invasion.

**Synonyms:**

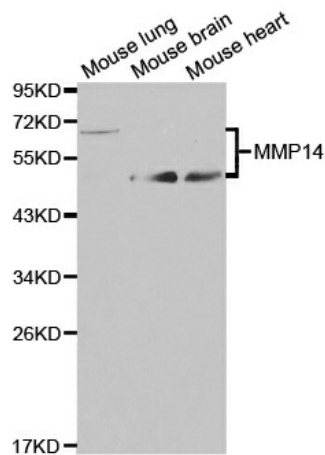
MMP-14; MMP-X1; MT-MMP; MT-MMP 1; MT1-MMP; MT1MMP; MTMMP1; WNCHRS

**Protein Families:**

Druggable Genome, Protease, Transmembrane

**Protein Pathways:**

GnRH signaling pathway

**Product images:**

Western blot analysis of extracts of various cell lines, using MMP14 antibody.