

Product datasheet for **TA332550S**

Estrogen Receptor beta (ESR2) Rabbit Polyclonal Antibody

Product data:

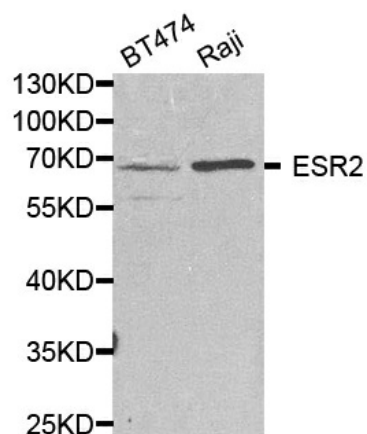
| | |
|-----------------------|--|
| Product Type: | Primary Antibodies |
| Applications: | WB |
| Recommended Dilution: | WB 1:500 - 1:2000 |
| Reactivity: | Human, Mouse, Rat |
| Host: | Rabbit |
| Isotype: | IgG |
| Clonality: | Polyclonal |
| Immunogen: | Recombinant protein of human ESR2 |
| Formulation: | Store at -20°C (regular) and -80°C (long term). Avoid freeze / thaw cycles. Buffer: PBS with 0.02% sodium azide, 50% glycerol, pH7.3. |
| Concentration: | lot specific |
| Purification: | Affinity purification |
| Conjugation: | Unconjugated |
| Storage: | Store at -20°C as received. |
| Stability: | Stable for 12 months from date of receipt. |
| Gene Name: | estrogen receptor 2 |
| Database Link: | NP_001428 Entrez Gene 13983 Mouse Entrez Gene 25149 Rat Entrez Gene 2100 Human Q92731 |
| Background: | This gene encodes a member of the family of estrogen receptors and superfamily of nuclear receptor transcription factors. The gene product contains an N-terminal DNA binding domain and C-terminal ligand binding domain and is localized to the nucleus, cytoplasm, and mitochondria. Upon binding to 17beta-estradiol or related ligands, the encoded protein forms homo- or hetero-dimers that interact with specific DNA sequences to activate transcription. Some isoforms dominantly inhibit the activity of other estrogen receptor family members. Several alternatively spliced transcript variants of this gene have been described, but the full-length nature of some of these variants has not been fully characterized. |
| Synonyms: | ER-BETA; Erb; ESR-BETA; ESRB; ESTRB; NR3A2 |



[View online »](#)

Protein Families: Druggable Genome, Nuclear Hormone Receptor, Transcription Factors

Product images:



Western blot analysis of extracts of various cell lines, using ESR2 antibody.