

Product datasheet for **TA332546S**

LAP2 (TMPO) Rabbit Polyclonal Antibody

Product data:

Product Type:	Primary Antibodies
Applications:	ELISA, ICC/IF, IHC, WB
Recommended Dilution:	WB, 1:500 - 1:1000 IHC-P, 1:50 - 1:200 IF/ICC, 1:50 - 1:200 ELISA, Recommended starting concentration is 1 µg/mL. Please optimize the concentration based on your specific assay requirements.
Reactivity:	Human, Mouse, Rat
Host:	Rabbit
Isotype:	IgG
Clonality:	Polyclonal
Formulation:	Store at -20°C (regular) and -80°C (long term). Avoid freeze / thaw cycles. Buffer: PBS with 0.02% sodium azide, 50% glycerol, pH7.3.
Concentration:	lot specific
Purification:	Affinity purification
Conjugation:	Unconjugated
Storage:	Store at -20°C. Avoid freeze / thaw cycles.
Stability:	Stable for 12 months from date of receipt.
Predicted Protein Size:	38kDa/50kDa/75kDa
Gene Name:	thymopoietin
Database Link:	NP_003267 Entrez Gene 21917 Mouse Entrez Gene 25359 Rat Entrez Gene 7112 Human P42166


[View online »](#)

Background:

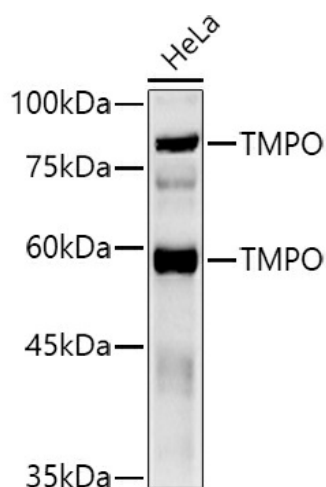
Through alternative splicing, this gene encodes several distinct LEM domain containing protein isoforms. LEM domain proteins include inner nuclear membrane and intranuclear proteins, and are involved in a variety of cellular functions including gene expression, chromatin organization, and replication and cell cycle control. The encoded alpha isoform is broadly diffuse in the nucleus and contains a lamin binding domain, while the beta and gamma isoforms are localized to the nuclear membrane and contain an HDAC3 interaction domain. The distinct isoforms may compete with each other when acting to chaperone other proteins and regulate transcription.

Synonyms:

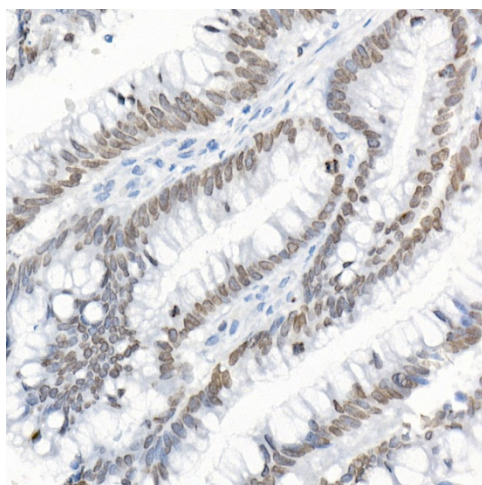
CMD1T; LAP2; LEMD4; PRO0868; TP

Protein Families:

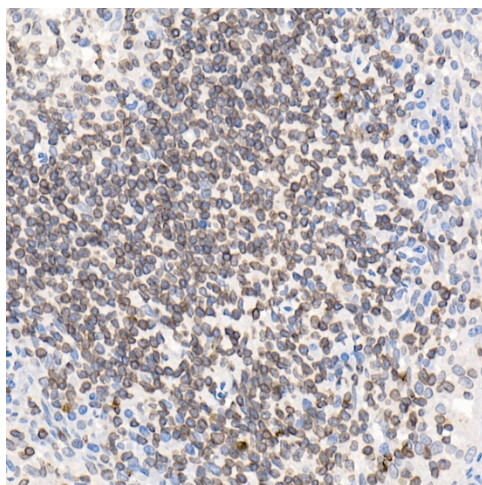
Stem cell - Pluripotency, Transmembrane

Product images:


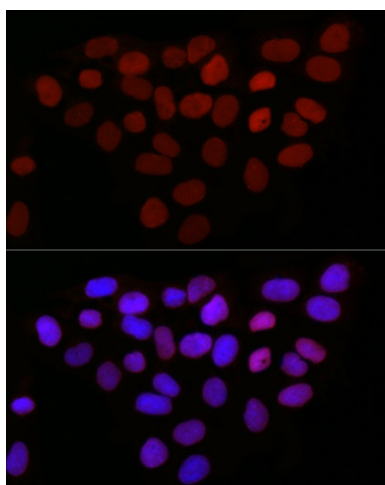
Western blot analysis of lysates from HeLa cells



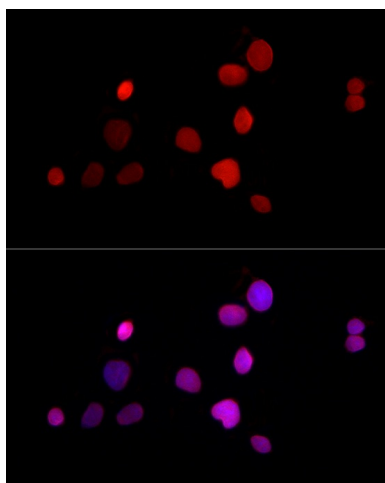
Immunohistochemistry analysis of paraffin-embedded Human colon carcinoma using TMPO Rabbit pAb ([TA332546]) at dilution of 1:20 (40x lens). High pressure antigen retrieval performed with 0.01M Citrate Bufferr (pH 6.0) prior to IHC staining.



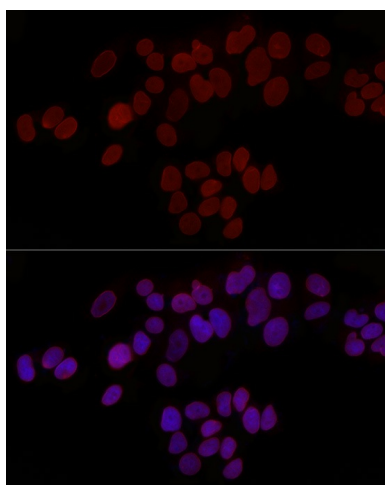
Immunohistochemistry analysis of paraffin-embedded Human tonsil using TMPO Rabbit pAb ([TA332546]) at dilution of 1:20 (40x lens). High pressure antigen retrieval performed with 0.01M Citrate Buffer (pH 6.0) prior to IHC staining.



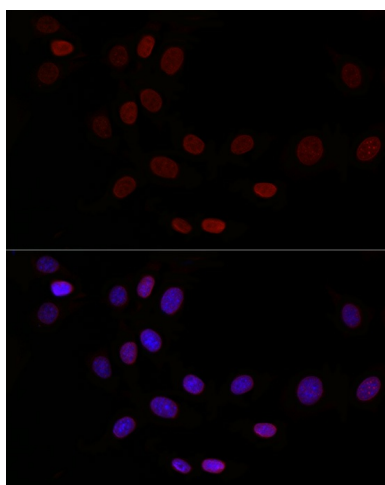
Immunofluorescence analysis of HeLa cells using TMPO Rabbit pAb ([TA332546]) at dilution of 1:50 (40x lens). Secondary antibody: Cy3-conjugated Goat anti-Rabbit IgG (H+L) (AS007) at 1:500 dilution. Blue: DAPI for nuclear staining.



Immunofluorescence analysis of HepG2 cells using TMPO Rabbit pAb ([TA332546]) at dilution of 1:50 (40x lens). Secondary antibody: Cy3-conjugated Goat anti-Rabbit IgG (H+L) (AS007) at 1:500 dilution. Blue: DAPI for nuclear staining.



Immunofluorescence analysis of MCF7 cells using TMPO Rabbit pAb ([TA332546]) at dilution of 1:50 (40x lens). Secondary antibody: Cy3-conjugated Goat anti-Rabbit IgG (H+L) (AS007) at 1:500 dilution. Blue: DAPI for nuclear staining.



Immunofluorescence analysis of NIH/3T3 cells using TMPO Rabbit pAb ([TA332546]) at dilution of 1:50 (40x lens). Secondary antibody: Cy3-conjugated Goat anti-Rabbit IgG (H+L) (AS007) at 1:500 dilution. Blue: DAPI for nuclear staining.