

Product datasheet for **TA332546**

LAP2 (TMPO) Rabbit Polyclonal Antibody

Product data:

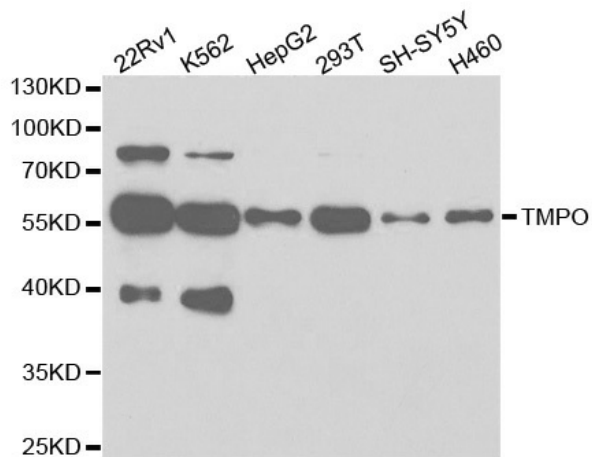
Product Type:	Primary Antibodies
Applications:	ICC/IF, IHC, WB
Recommended Dilution:	WB 1:500 - 1:2000;IF 1:50 - 1:200
Reactivity:	Human, Mouse, Rat
Host:	Rabbit
Isotype:	IgG
Clonality:	Polyclonal
Immunogen:	Recombinant protein of human TMPO
Formulation:	Store at -20°C (regular) and -80°C (long term). Avoid freeze / thaw cycles. Buffer: PBS with 0.02% sodium azide, 50% glycerol, pH7.3.
Concentration:	lot specific
Purification:	Affinity purification
Conjugation:	Unconjugated
Storage:	Store at -20°C as received.
Stability:	Stable for 12 months from date of receipt.
Predicted Protein Size:	454
Gene Name:	thymopoietin
Database Link:	NP_003267 Entrez Gene 21917 Mouse Entrez Gene 25359 Rat Entrez Gene 7112 Human P42166
Background:	The protein encoded by this gene resides in the nucleus and may play a role in the assembly of the nuclear lamina, and thus help maintain the structural organization of the nuclear envelope. It may function as a receptor for the attachment of lamin filaments to the inner nuclear membrane. Mutations in this gene are associated with dilated cardiomyopathy. Alternatively spliced transcript variants encoding different isoforms have been noted for this gene.
Synonyms:	CMD1T; LAP2; LEMD4; PRO0868; TP



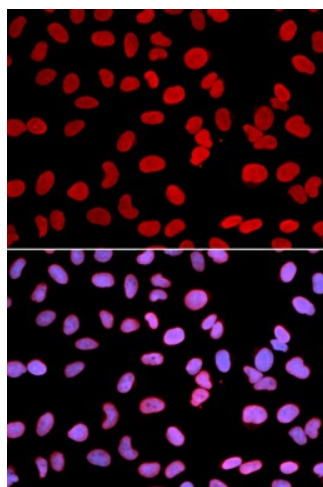
[View online »](#)

Protein Families: Stem cell - Pluripotency, Transmembrane

Product images:



Western blot analysis of extracts of various cell lines, using TMPO antibody.



Immunofluorescence analysis of U2OS cell using TMPO antibody. Blue: DAPI for nuclear staining.