

## Product datasheet for **TA332544S**

### Major Basic Protein (PRG2) Rabbit Polyclonal Antibody

#### Product data:

Product Type:	Primary Antibodies
Applications:	ICC/IF, IHC, WB
Recommended Dilution:	WB 1:500 - 1:2000
Reactivity:	Human, Mouse, Rat
Host:	Rabbit
Isotype:	IgG
Clonality:	Polyclonal
Immunogen:	Recombinant protein of human PRG2
Formulation:	Store at -20°C (regular) and -80°C (long term). Avoid freeze / thaw cycles. Buffer: PBS with 0.02% sodium azide, 50% glycerol, pH7.3.
Concentration:	lot specific
Purification:	Affinity purification
Conjugation:	Unconjugated
Storage:	Store at -20°C as received.
Stability:	Stable for 12 months from date of receipt.
Predicted Protein Size:	222
Gene Name:	proteoglycan 2, bone marrow (natural killer cell activator, eosinophil granule major basic protein)
Database Link:	<a href="#">NP_002719</a> <a href="#">Entrez Gene 19074 Mouse</a> <a href="#">Entrez Gene 5553 Human</a> <a href="#">P13727</a>



[View online »](#)

**Background:**

The protein encoded by this gene is the predominant constituent of the crystalline core of the eosinophil granule. High levels of the proform of this protein are also present in placenta and pregnancy serum, where it exists as a complex with several other proteins including pregnancy-associated plasma protein A (PAPPA), angiotensinogen (AGT), and C3dg. This protein may be involved in antiparasitic defense mechanisms as a cytotoxin and helminthotoxin, and in immune hypersensitivity reactions. It is directly implicated in epithelial cell damage, exfoliation, and bronchospasm in allergic diseases. Alternatively spliced transcript variants encoding different isoforms have been found for this gene.

**Synonyms:**

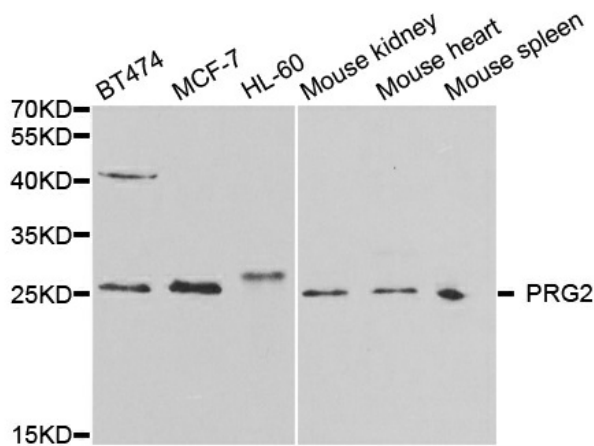
BMPG; MBP; MBP1

**Protein Families:**

Secreted Protein

**Protein Pathways:**

Asthma

**Product images:**

Western blot analysis of extracts of various cell lines, using PRG2 antibody.