

## Product datasheet for TA332542

### DKK3 Rabbit Polyclonal Antibody

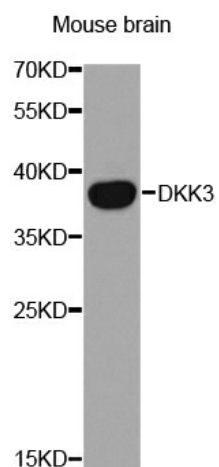
#### Product data:

Product Type:	Primary Antibodies
Applications:	ICC/IF, WB
Recommended Dilution:	WB 1:500 - 1:2000
Reactivity:	Human, Mouse, Rat
Host:	Rabbit
Isotype:	IgG
Clonality:	Polyclonal
Immunogen:	Recombinant protein of human DKK3
Formulation:	Store at -20°C (regular) and -80°C (long term). Avoid freeze / thaw cycles. Buffer: PBS with 0.02% sodium azide, 50% glycerol, pH7.3.
Concentration:	lot specific
Purification:	Affinity purification
Conjugation:	Unconjugated
Storage:	Store at -20°C as received.
Stability:	Stable for 12 months from date of receipt.
Predicted Protein Size:	350
Gene Name:	dickkopf WNT signaling pathway inhibitor 3
Database Link:	<a href="#">NP_056965</a> <a href="#">Entrez Gene 50781</a> <a href="#">MouseEntrez Gene 171548</a> <a href="#">RatEntrez Gene 27122</a> <a href="#">Human Q9UBP4</a>
Background:	This gene encodes a protein that is a member of the dickkopf family. The secreted protein contains two cysteine rich regions and is involved in embryonic development through its interactions with the Wnt signaling pathway. The expression of this gene is decreased in a variety of cancer cell lines and it may function as a tumor suppressor gene. Alternative splicing results in multiple transcript variants encoding the same protein.
Synonyms:	REIC; RIG
Protein Families:	Druggable Genome, Secreted Protein



[View online »](#)

## Product images:



Western blot analysis of extracts of mouse brain lines, using DKK3 antibody.