

## Product datasheet for TA332536

### Hsp47 (SERPINH1) Rabbit Polyclonal Antibody

#### Product data:

Product Type:	Primary Antibodies
Applications:	ICC/IF, IHC, WB
Recommended Dilution:	WB 1:500 - 1:2000;IF 1:50- 1:200
Reactivity:	Human, Mouse, Rat
Host:	Rabbit
Isotype:	IgG
Clonality:	Polyclonal
Immunogen:	Recombinant protein of human SERPINH1
Formulation:	Store at -20°C (regular) and -80°C (long term). Avoid freeze / thaw cycles. Buffer: PBS with 0.02% sodium azide, 50% glycerol, pH7.3.
Concentration:	lot specific
Purification:	Affinity purification
Conjugation:	Unconjugated
Storage:	Store at -20°C as received.
Stability:	Stable for 12 months from date of receipt.
Predicted Protein Size:	418
Gene Name:	serpin family H member 1
Database Link:	<a href="#">NP_001226</a> <a href="#">Entrez Gene 12406 MouseEntrez Gene 29345 RatEntrez Gene 871 Human P50454</a>

**Background:** This gene encodes a member of the serpin superfamily of serine proteinase inhibitors. The encoded protein is localized to the endoplasmic reticulum and plays a role in collagen biosynthesis as a collagen-specific molecular chaperone. Autoantibodies to the encoded protein have been found in patients with rheumatoid arthritis. Expression of this gene may be a marker for cancer, and nucleotide polymorphisms in this gene may be associated with preterm birth caused by preterm premature rupture of membranes. Alternatively spliced transcript variants have been observed for this gene, and a pseudogene of this gene is located on the short arm of chromosome 9.

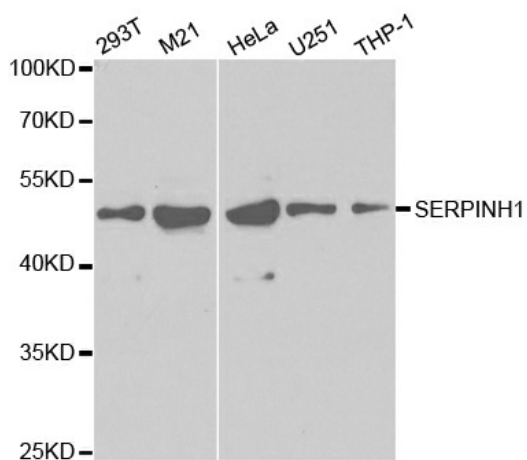


[View online »](#)

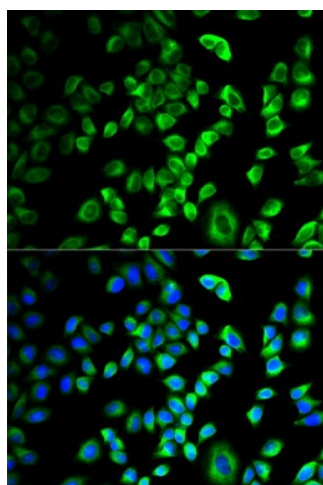
**Synonyms:** AsTP3; CBP1; CBP2; gp46; HSP47; OI10; PIG14; PPROM; RA-A47; SERPINH2

**Protein Families:** Druggable Genome

**Product images:**



Western blot analysis of extracts of various cell lines, using SERPINH1 antibody.



Immunofluorescence analysis of HeLa cell using SERPINH1 antibody. Blue: DAPI for nuclear staining.