

Product datasheet for **TA332534S**

Axin 2 (AXIN2) Rabbit Polyclonal Antibody

Product data:

Product Type:	Primary Antibodies
Applications:	ICC/IF, IHC, WB
Recommended Dilution:	WB 1:500 - 1:2000;IF 1:50 - 1:200
Reactivity:	Human, Mouse, Rat
Host:	Rabbit
Isotype:	IgG
Clonality:	Polyclonal
Immunogen:	Recombinant protein of human AXIN2
Formulation:	Store at -20°C (regular) and -80°C (long term). Avoid freeze / thaw cycles. Buffer: PBS with 0.02% sodium azide, 50% glycerol, pH7.3.
Concentration:	lot specific
Purification:	Affinity purification
Conjugation:	Unconjugated
Storage:	Store at -20°C as received.
Stability:	Stable for 12 months from date of receipt.
Predicted Protein Size:	93 kDa
Gene Name:	axin 2
Database Link:	NP_004646 Entrez Gene 12006 Mouse Entrez Gene 29134 Rat Entrez Gene 8313 Human Q9Y2T1



[View online »](#)

Background:

The Axin-related protein, Axin2, presumably plays an important role in the regulation of the stability of beta-catenin in the Wnt signaling pathway, like its rodent homologs, mouse conductin/rat axil. In mouse, conductin organizes a multiprotein complex of APC (adenomatous polyposis of the colon), beta-catenin, glycogen synthase kinase 3-beta, and conductin, which leads to the degradation of beta-catenin. Apparently, the deregulation of beta-catenin is an important event in the genesis of a number of malignancies. The AXIN2 gene has been mapped to 17q23-q24, a region that shows frequent loss of heterozygosity in breast cancer, neuroblastoma, and other tumors. Mutations in this gene have been associated with colorectal cancer with defective mismatch repair.

Synonyms:

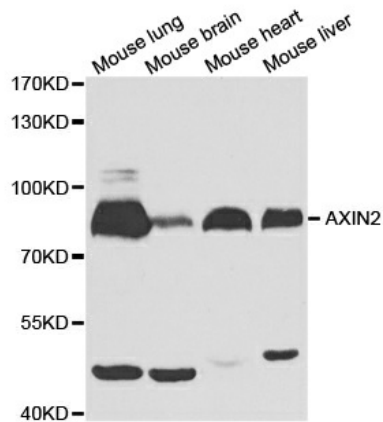
AXIL; ODCRCS

Protein Families:

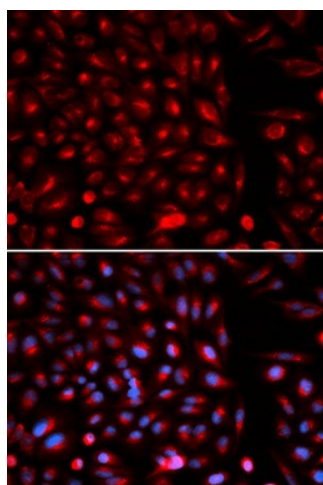
Druggable Genome, ES Cell Differentiation/IPS, Induced pluripotent stem cells

Protein Pathways:

Basal cell carcinoma, Colorectal cancer, Endometrial cancer, Pathways in cancer, Wnt signaling pathway

Product images:

Western blot analysis of extracts of various cell lines, using AXIN2 antibody.



Immunofluorescence analysis of U2OS cell using AXIN2 antibody. Blue: DAPI for nuclear staining.