

## Product datasheet for **TA332531**

### G0 Protein alpha (GNAO1) Rabbit Polyclonal Antibody

#### Product data:

Product Type:	Primary Antibodies
Applications:	ICC/IF, WB
Recommended Dilution:	WB 1:500 - 1:2000
Reactivity:	Human, Mouse, Rat
Host:	Rabbit
Isotype:	IgG
Clonality:	Polyclonal
Immunogen:	Recombinant protein of human GNAO1
Formulation:	Store at -20°C (regular) and -80°C (long term). Avoid freeze / thaw cycles. Buffer: PBS with 0.02% sodium azide, 50% glycerol, pH7.3.
Concentration:	lot specific
Purification:	Affinity purification
Conjugation:	Unconjugated
Storage:	Store at -20°C as received.
Stability:	Stable for 12 months from date of receipt.
Predicted Protein Size:	354
Gene Name:	G protein subunit alpha o1
Database Link:	<a href="#">NP_066268</a> <a href="#">Entrez Gene 14681 Mouse</a> <a href="#">Entrez Gene 50664 Rat</a> <a href="#">Entrez Gene 2775 Human</a> <a href="#">P09471</a>
Background:	Heterotrimeric G proteins are membrane bound GTPases that are linked to 7-TM receptors. Each G protein contains an alpha-, beta- and gamma-subunit and is bound to GDP in the 'off' state. Ligand-receptor binding results in detachment of the G protein, switching it to an 'on' state and permitting Galpha activation of second messenger signalling cascades. There are several types of Galpha proteins; Galphas and Galphai bind directly to adenylyl cyclase and stimulate or inhibit its activity, leading to an increase or decrease in cAMP levels respectively.
Synonyms:	EIEE17; G-ALPHA-o; GNAO; HLA-DQB1

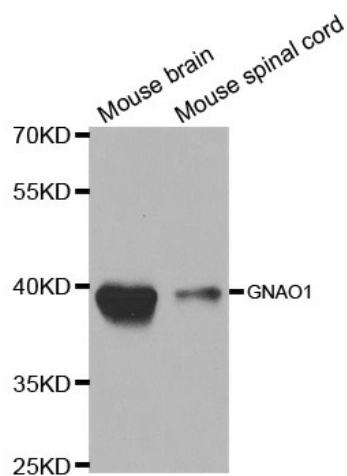


[View online »](#)

Protein Families: Druggable Genome

Protein Pathways: Long-term depression, Melanogenesis

### Product images:



Western blot analysis of extracts of various cell lines, using GNAO1 antibody.