

## Product datasheet for **TA332527S**

### CASK Rabbit Polyclonal Antibody

#### Product data:

|                         |  |
|-------------------------|--|
| Product Type:           | Primary Antibodies   |
| Applications:           | ELISA, ICC/IF, WB  |
| Recommended Dilution:   | WB, 1:500 - 1:2000<br>IF/ICC, 1:50 - 1:200<br>ELISA, Recommended starting concentration is 1 µg/mL. Please optimize the concentration based on your specific assay requirements. |
| Reactivity:             | Human  |
| Host:                   | Rabbit   |
| Isotype:                | IgG  |
| Clonality:              | Polyclonal   |
| Formulation:            | Store at -20°C (regular) and -80°C (long term). Avoid freeze / thaw cycles. Buffer: PBS with 0.02% sodium azide, 50% glycerol, pH7.3.  |
| Concentration:          | lot specific   |
| Purification:           | Affinity purification  |
| Conjugation:            | Unconjugated   |
| Storage:                | Store at -20°C. Avoid freeze / thaw cycles.  |
| Stability:              | Stable for 12 months from date of receipt.   |
| Predicted Protein Size: | 105kDa   |
| Gene Name:              | calcium/calmodulin dependent serine protein kinase   |
| Database Link:          | <a href="#">NP_003679</a><br><a href="#">Entrez Gene 8573 Human</a><br><a href="#">O14936</a>  |



[View online »](#)

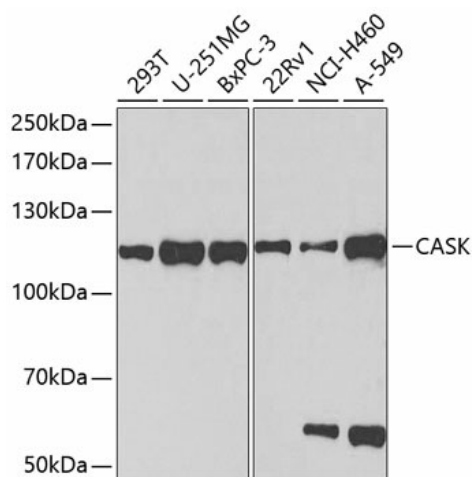
**Background:** This gene encodes a calcium/calmodulin-dependent serine protein kinase. The encoded protein is a MAGUK (membrane-associated guanylate kinase) protein family member. These proteins are scaffold proteins and the encoded protein is located at synapses in the brain. Mutations in this gene are associated with FG syndrome 4, intellectual disability and microcephaly with pontine and cerebellar hypoplasia, and a form of X-linked intellectual disability. Multiple transcript variants encoding different isoforms have been found for this gene.

**Synonyms:** CAGH39; CAMGUK; CMG; FGS4; LIN2; MICPCH; MRXSNA; TNRC8

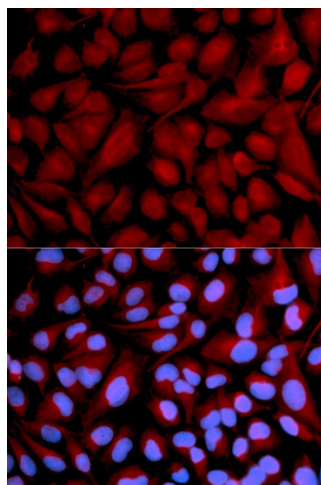
**Protein Families:** Druggable Genome, Protein Kinase

**Protein Pathways:** Tight junction

## Product images:



Western blot analysis of various lysates using CASK Rabbit pAb (TA332527) at 1:1000 dilution. Secondary antibody: HRP-conjugated Goat anti-Rabbit IgG (H+L) (AS014) at 1:10000 dilution. Lysates/proteins: 25µg per lane. Blocking buffer: 3% nonfat dry milk in TBST. Detection: ECL Basic Kit (RM00020). Exposure time: 90s.



Immunofluorescence analysis of U2OS cells using CASK Rabbit pAb (TA332527). Secondary antibody: Cy3-conjugated Goat anti-Rabbit IgG (H+L) (AS007) at 1:500 dilution. Blue: DAPI for nuclear staining.