

## Product datasheet for **TA332523**

### Integrin beta 5 (ITGB5) Rabbit Polyclonal Antibody

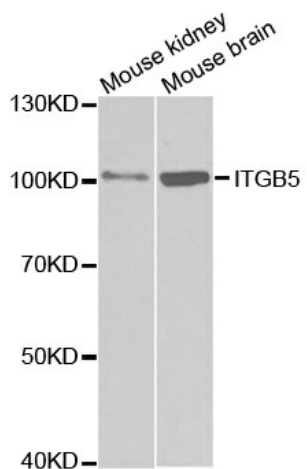
#### Product data:

Product Type:	Primary Antibodies
Applications:	WB
Recommended Dilution:	WB 1:500 - 1:2000
Reactivity:	Human, Mouse, Rat
Host:	Rabbit
Isotype:	IgG
Clonality:	Polyclonal
Immunogen:	Recombinant protein of human ITGB5
Formulation:	Store at -20°C (regular) and -80°C (long term). Avoid freeze / thaw cycles. Buffer: PBS with 0.02% sodium azide, 50% glycerol, pH7.3.
Concentration:	lot specific
Purification:	Affinity purification
Conjugation:	Unconjugated
Storage:	Store at -20°C as received.
Stability:	Stable for 12 months from date of receipt.
Predicted Protein Size:	799
Gene Name:	integrin subunit beta 5
Database Link:	<a href="#">NP_002204</a> <a href="#">Entrez Gene 16419 MouseEntrez Gene 257645 RatEntrez Gene 3693 Human P18084</a>
Synonyms:	FLJ26658
Protein Families:	Druggable Genome, Transmembrane
Protein Pathways:	Arrhythmogenic right ventricular cardiomyopathy (ARVC), Dilated cardiomyopathy, ECM-receptor interaction, Focal adhesion, Hypertrophic cardiomyopathy (HCM), Regulation of actin cytoskeleton



[View online »](#)

## Product images:



Western blot analysis of extracts of various cell lines, using ITGB5 antibody.