

Product datasheet for **TA332520**

EPB41 Rabbit Polyclonal Antibody

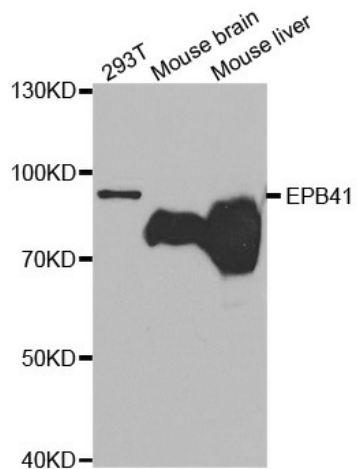
Product data:

Product Type:	Primary Antibodies
Applications:	WB
Recommended Dilution:	WB 1:500 - 1:2000
Reactivity:	Human, Mouse, Rat
Host:	Rabbit
Isotype:	IgG
Clonality:	Polyclonal
Immunogen:	Recombinant protein of human EPB41
Formulation:	Store at -20°C (regular) and -80°C (long term). Avoid freeze / thaw cycles. Buffer: PBS with 0.02% sodium azide, 50% glycerol, pH7.3.
Concentration:	lot specific
Purification:	Affinity purification
Conjugation:	Unconjugated
Storage:	Store at -20°C as received.
Stability:	Stable for 12 months from date of receipt.
Gene Name:	erythrocyte membrane protein band 4.1
Database Link:	NP_001159479 Entrez Gene 269587 Mouse Entrez Gene 313052 Rat Entrez Gene 2035 Human P11171
Background:	The protein encoded by this gene, together with spectrin and actin, constitute the red cell membrane cytoskeletal network. This complex plays a critical role in erythrocyte shape and deformability. Mutations in this gene are associated with type 1 elliptocytosis (EL1). Alternatively spliced transcript variants encoding different isoforms have been described for this gene.
Synonyms:	4.1R; EL1; HE
Protein Families:	Druggable Genome
Protein Pathways:	Tight junction



[View online »](#)

Product images:



Western blot analysis of extracts of various cell lines, using EPB41 antibody.