

Product datasheet for **TA332513**

H4C14 Rabbit Polyclonal Antibody

Product data:

Product Type:	Primary Antibodies
Applications:	ChIP, ChIP-seq, ICC/IF, IHC, IP, WB
Recommended Dilution:	WB 1:500 - 1:2000;IF 1:50 - 1:200;IP 1:50 - 1:200;ChIP 1:20 - 1:100
Reactivity:	Human, Mouse, Rat, Other (Wide Range)
Host:	Rabbit
Isotype:	IgG
Clonality:	Polyclonal
Immunogen:	A synthetic methylated peptide corresponding to residues surrounding K20 of human histone H4
Formulation:	Store at -20°C (regular) and -80°C (long term). Avoid freeze / thaw cycles. Buffer: PBS with 0.02% sodium azide, 50% glycerol, pH7.3.
Concentration:	lot specific
Purification:	Affinity purification
Conjugation:	Unconjugated
Storage:	Store at -20°C as received.
Stability:	Stable for 12 months from date of receipt.
Predicted Protein Size:	11 kDa
Gene Name:	histone cluster 2, H4a
Database Link:	NP_003539 Entrez Gene 502913 Rat Entrez Gene 8370 Human P62805



[View online »](#)

Background:

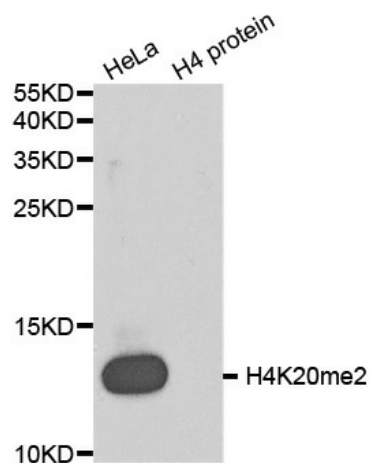
Histones are basic nuclear proteins that are responsible for the nucleosome structure of the chromosomal fiber in eukaryotes. This structure consists of approximately 146 bp of DNA wrapped around a nucleosome, an octamer composed of pairs of each of the four core histones (H2A, H2B, H3, and H4). The chromatin fiber is further compacted through the interaction of a linker histone, H1, with the DNA between the nucleosomes to form higher order chromatin structures. This gene is intronless and encodes a member of the histone H4 family. Transcripts from this gene lack polyA tails; instead, they contain a palindromic termination element. This gene is found in a histone cluster on chromosome 1. This gene is one of four histone genes in the cluster that are duplicated; this record represents the centromeric copy.

Synonyms:

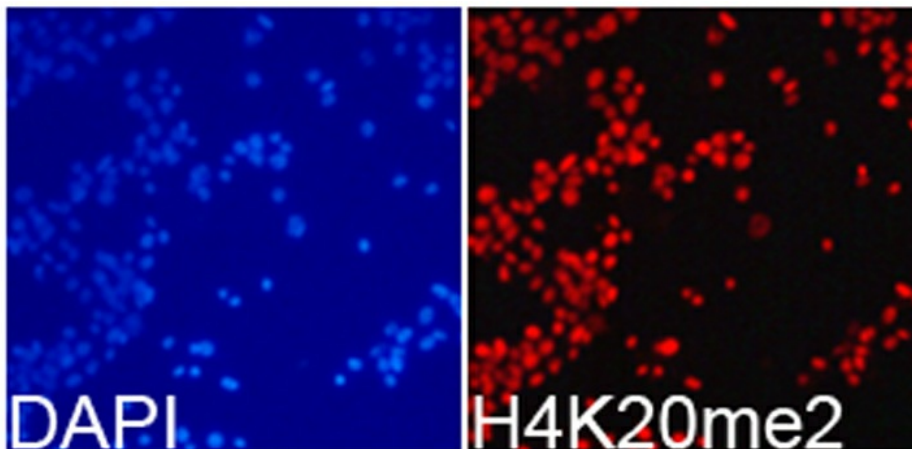
FO108; H4; H4F2; H4FN; HIST2H4; n

Protein Pathways:

Systemic lupus erythematosus

Product images:

Western blot analysis of extracts of HeLa cell line and H4 protein expressed in E.coli., using H4K20me2 antibody.



Immunofluorescence analysis of 293T cell using H4K20me2 antibody. Blue: DAPI for nuclear staining.