

Product datasheet for **TA332511S**

KDM3A / JHDM2A (KDM3A) Rabbit Polyclonal Antibody

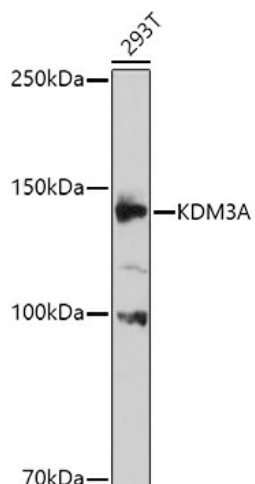
Product data:

Product Type:	Primary Antibodies
Applications:	ELISA, WB
Recommended Dilution:	WB, 1:500 - 1:1000 ELISA, Recommended starting concentration is 1 µg/mL. Please optimize the concentration based on your specific assay requirements.
Reactivity:	Mouse, Human, Rat
Host:	Rabbit
Isotype:	IgG
Clonality:	Polyclonal
Formulation:	Store at -20°C (regular) and -80°C (long term). Avoid freeze / thaw cycles. Buffer: PBS with 0.02% sodium azide, 50% glycerol, pH7.3.
Concentration:	lot specific
Purification:	Affinity purification
Conjugation:	Unconjugated
Storage:	Store at -20°C. Avoid freeze / thaw cycles.
Stability:	Stable for 12 months from date of receipt.
Predicted Protein Size:	147kDa
Gene Name:	lysine demethylase 3A
Database Link:	NP_001140160 Entrez Gene 104263 Mouse Entrez Gene 312440 Rat Entrez Gene 55818 Human Q9Y4C1
Background:	Enables androgen receptor binding activity; histone H3-methyl-lysine-9 demethylase activity; and iron ion binding activity. Involved in several processes, including androgen receptor signaling pathway; formaldehyde biosynthetic process; and histone H3-K9 demethylation. Located in nucleoplasm. Implicated in cervical cancer and colon cancer. Biomarker of Ewing sarcoma; hepatocellular carcinoma; nasopharynx carcinoma; and prostate cancer.
Synonyms:	JHDM2A; JHMD2A; JMJD1; JMJD1A; TSGA

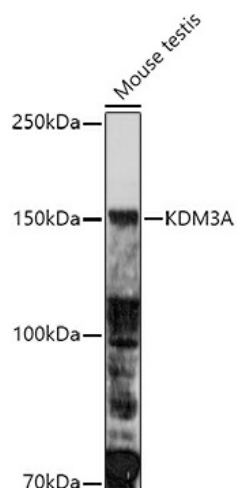


[View online »](#)

Product images:



Western blot analysis of lysates from 293T cells



Western blot analysis of lysates from Mouse testis