

Product datasheet for **TA332511**

KDM3A / JHDM2A (KDM3A) Rabbit Polyclonal Antibody

Product data:

Product Type:	Primary Antibodies
Applications:	WB
Recommended Dilution:	WB 1:500 - 1:2000
Reactivity:	Mouse, Human, Rat
Host:	Rabbit
Isotype:	IgG
Clonality:	Polyclonal
Immunogen:	Recombinant protein of human KDM3A
Formulation:	Store at -20°C (regular) and -80°C (long term). Avoid freeze / thaw cycles. Buffer: PBS with 0.02% sodium azide, 50% glycerol, pH7.3.
Concentration:	lot specific
Purification:	Affinity purification
Conjugation:	Unconjugated
Storage:	Store at -20°C as received.
Stability:	Stable for 12 months from date of receipt.
Predicted Protein Size:	150 kDa
Gene Name:	lysine demethylase 3A
Database Link:	NP_001140160 Entrez Gene 104263 MouseEntrez Gene 312440 RatEntrez Gene 55818 Human Q9Y4C1



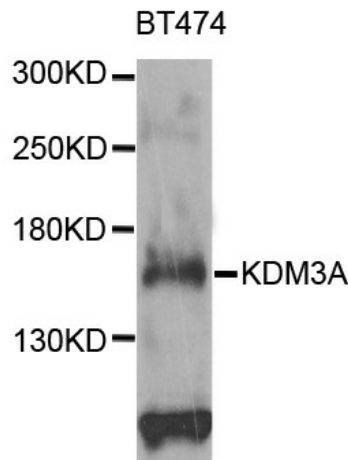
[View online »](#)

Background:

KDM3A, also name as JMJD1A, JHDM2A, JMJD1, JMJD1A, KIAA0742 and TSGA, belongs to the JHDM2 histone demethylase family. It is a histone demethylase that specifically demethylates 'Lys-9' of histone H3, thereby playing a central role in histone code. It is involved in spermatogenesis by regulating expression of target genes such as PRM1 and TMP1 which are required for packaging and condensation of sperm chromatin. It is involved in obesity resistance through regulation of metabolic genes such as PPARA and UCP1. (PubMed:16603237), JMJD1A is a useful biomarker for hypoxic tumor cells and a prognostic marker that could be a promising therapeutic target against CRC. (PMID:20823141) This antibody recognize the N-term of KDM3A(JMJD1A)

Synonyms:

JHDM2A; JHMD2A; JMJD1; JMJD1A; TSGA

Product images:

Western blot analysis of extracts of BT474 cells, using KDM3A antibody.