

Product datasheet for **TA332505**

REG3A Rabbit Polyclonal Antibody

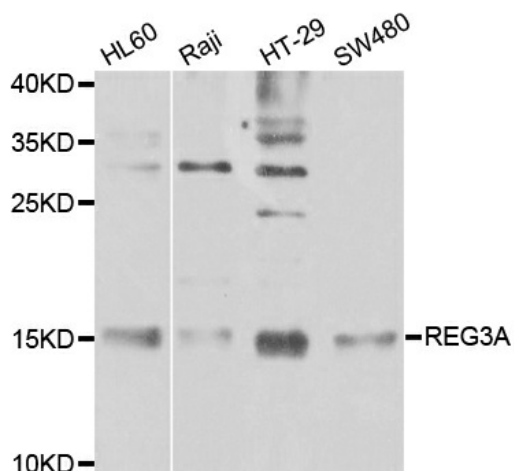
Product data:

Product Type:	Primary Antibodies
Applications:	IF, IHC, WB
Recommended Dilution:	WB 1:500 - 1:2000;IHC 1:50 - 1:100
Reactivity:	Human, Mouse, Rat
Host:	Rabbit
Isotype:	IgG
Clonality:	Polyclonal
Immunogen:	Recombinant protein of human REG3A
Formulation:	Store at -20°C (regular) and -80°C (long term). Avoid freeze / thaw cycles. Buffer: PBS with 0.02% sodium azide, 50% glycerol, pH7.3.
Concentration:	lot specific
Purification:	Affinity purification
Conjugation:	Unconjugated
Storage:	Store at -20°C as received.
Stability:	Stable for 12 months from date of receipt.
Predicted Protein Size:	19 kDa
Gene Name:	regenerating family member 3 alpha
Database Link:	NP_002571 Entrez Gene 19694 MouseEntrez Gene 171162 RatEntrez Gene 5068 Human Q06141
Background:	This gene encodes a pancreatic secretory protein that may be involved in cell proliferation or differentiation. It has similarity to the C-type lectin superfamily. The enhanced expression of this gene is observed during pancreatic inflammation and liver carcinogenesis. Alternate splicing results in multiple transcript variants that encode the same protein._
Synonyms:	HIP; INGAP; PAP; PAP-H; PAP1; PBCGF; REG-III; REG3
Protein Families:	Druggable Genome, Secreted Protein

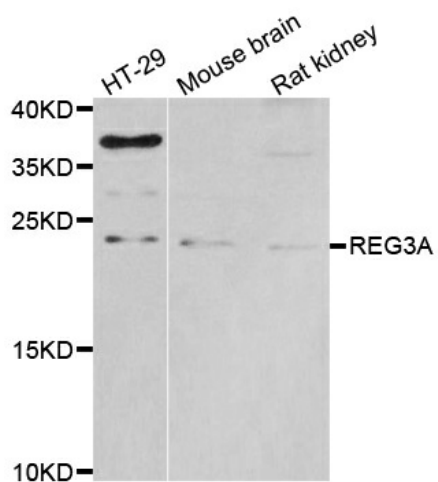


[View online »](#)

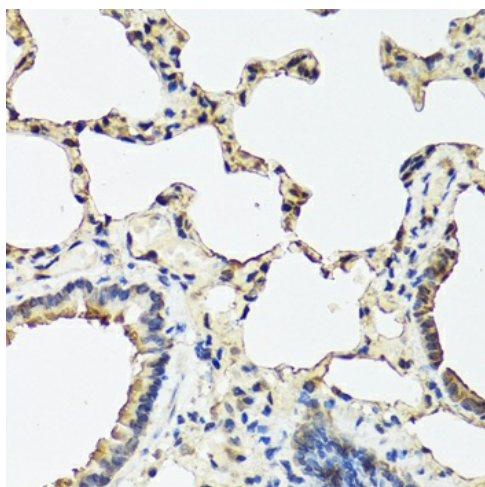
Product images:



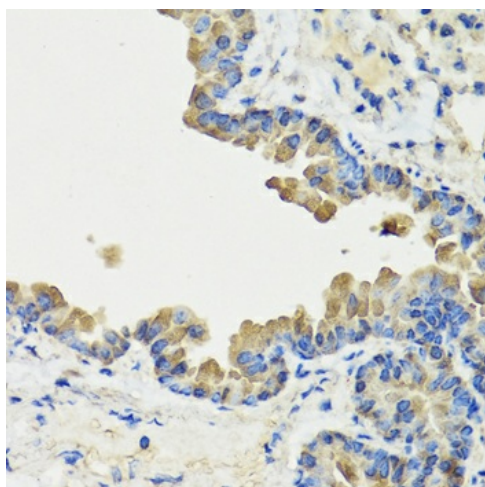
Western blot analysis of extracts of various cell lines, using REG3A antibody.



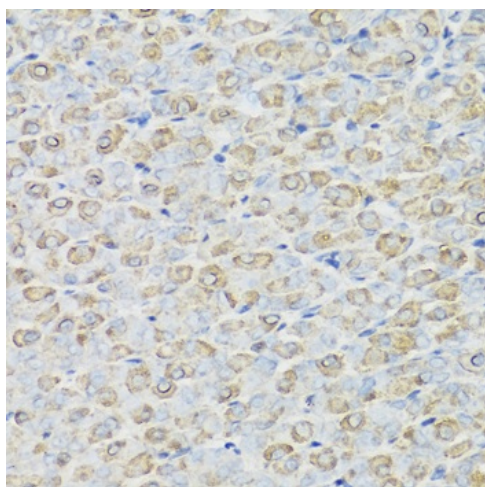
Western blot analysis of extracts of various cell lines, using REG3A antibody.



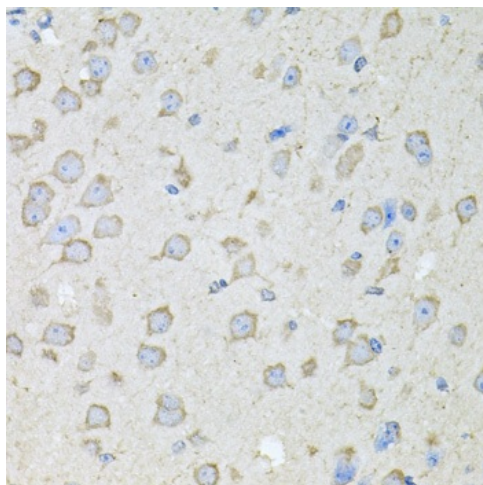
Immunohistochemistry of paraffin-embedded rat lung using REG3A antibody at dilution of 1:100 (40x lens).



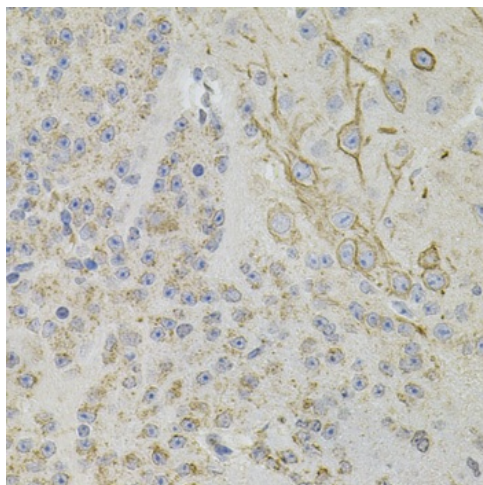
Immunohistochemistry of paraffin-embedded mouse lung using REG3A antibody at dilution of 1:100 (40x lens).



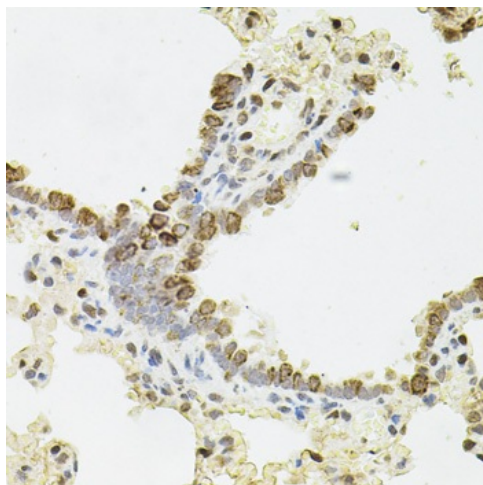
Immunohistochemistry of paraffin-embedded mouse stomach using REG3A antibody at dilution of 1:100 (40x lens).



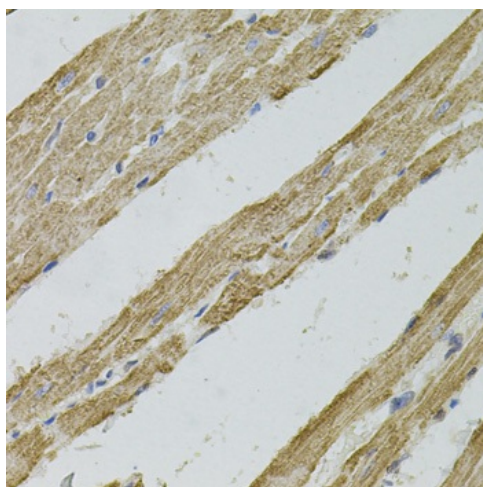
Immunohistochemistry of paraffin-embedded mouse brain using REG3A antibody at dilution of 1:100 (x40 lens).



Immunohistochemistry of paraffin-embedded mouse brain using REG3A antibody.



Immunohistochemistry of paraffin-embedded rat lung using REG3A antibody.



Immunohistochemistry of paraffin-embedded rat heart using REG3A antibody.