

Product datasheet for **TA332504S**

KPNA4 Rabbit Polyclonal Antibody

Product data:

Product Type:	Primary Antibodies
Applications:	ELISA, ICC/IF, IHC, WB
Recommended Dilution:	WB, 1:100 - 1:500 IHC-P, 1:50 - 1:200 IF/ICC, 1:50 - 1:200 ELISA, Recommended starting concentration is 1 µg/mL. Please optimize the concentration based on your specific assay requirements.
Reactivity:	Human, Mouse, Rat
Host:	Rabbit
Isotype:	IgG
Clonality:	Polyclonal
Formulation:	Store at -20°C (regular) and -80°C (long term). Avoid freeze / thaw cycles. Buffer: PBS with 0.02% sodium azide, 50% glycerol, pH7.3.
Concentration:	lot specific
Purification:	Affinity purification
Conjugation:	Unconjugated
Storage:	Store at -20°C. Avoid freeze / thaw cycles.
Stability:	Stable for 12 months from date of receipt.
Predicted Protein Size:	58kDa
Gene Name:	karyopherin subunit alpha 4
Database Link:	NP_002259 Entrez Gene 16649 Mouse Entrez Gene 361959 Rat Entrez Gene 3840 Human O00629



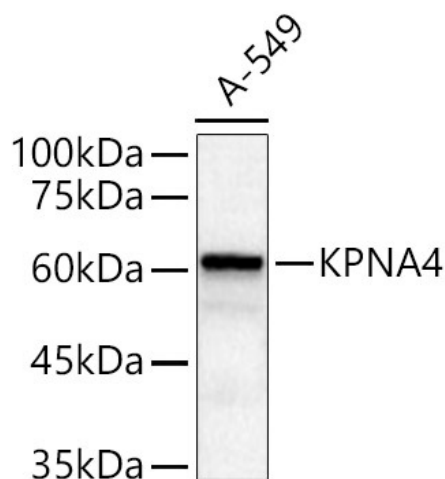
[View online »](#)

Background:

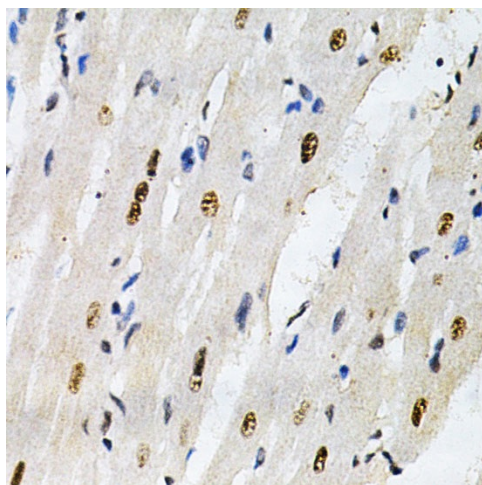
The nuclear import of karyophilic proteins is directed by short amino acid sequences termed nuclear localization signals (NLSs). Karyopherins, or importins, are cytoplasmic proteins that recognize NLSs and dock NLS-containing proteins to the nuclear pore complex. The protein encoded by this gene shares the sequence similarity with *Xenopus* importin- α and *Saccharomyces cerevisiae* Srp1. This protein is found to interact with the NLSs of DNA helicase Q1 and SV40 T antigen.

Synonyms:

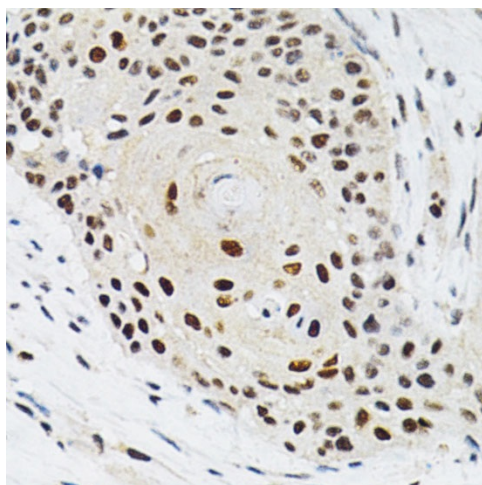
IPOA3; QIP1; SRP3

Product images:


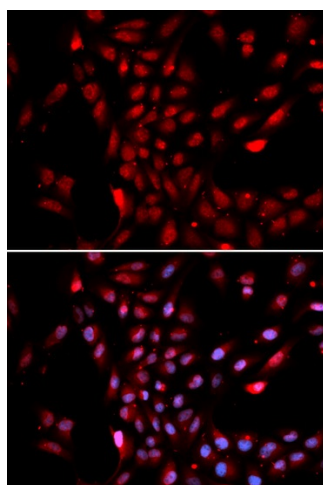
Western blot analysis of lysates from A-549 cells



Immunohistochemistry analysis of paraffin-embedded Rat heart using KPNA4 Rabbit pAb ([TA332504]) at dilution of 1:200 (40x lens). Microwave antigen retrieval performed with 0.01M PBS Buffer (pH 7.2) prior to IHC staining.



Immunohistochemistry analysis of paraffin-embedded Human esophageal cancer using KPNA4 Rabbit pAb ([TA332504]) at dilution of 1:200 (40x lens). Microwave antigen retrieval performed with 0.01M PBS Buffer (pH 7.2) prior to IHC staining.



Immunofluorescence analysis of U2OS cells using KPNA4 Rabbit pAb ([TA332504]). Secondary antibody: Cy3-conjugated Goat anti-Rabbit IgG (H+L) (AS007) at 1:500 dilution. Blue: DAPI for nuclear staining.