

Product datasheet for **TA332504**

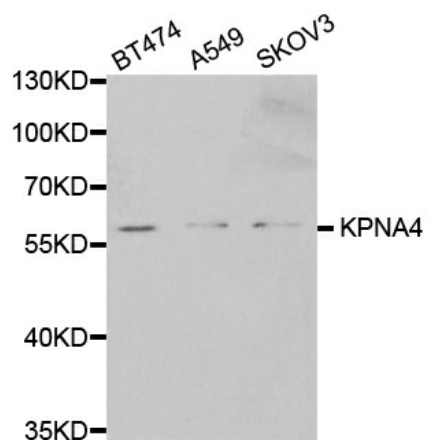
KPNA4 Rabbit Polyclonal Antibody

Product data:

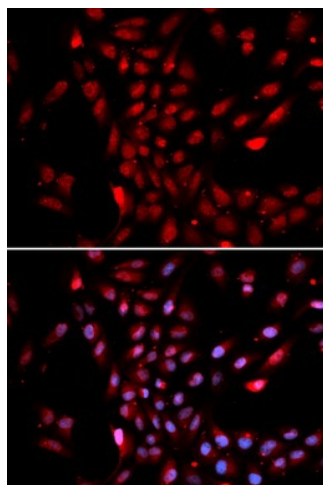
Product Type:	Primary Antibodies
Applications:	ICC/IF, IHC, WB
Recommended Dilution:	WB 1:500 - 1:2000;IF 1:50- 1:200
Reactivity:	Human, Mouse, Rat
Host:	Rabbit
Isotype:	IgG
Clonality:	Polyclonal
Immunogen:	Recombinant protein of human KPNA4
Formulation:	Store at -20°C (regular) and -80°C (long term). Avoid freeze / thaw cycles. Buffer: PBS with 0.02% sodium azide, 50% glycerol, pH7.3.
Concentration:	lot specific
Purification:	Affinity purification
Conjugation:	Unconjugated
Storage:	Store at -20°C as received.
Stability:	Stable for 12 months from date of receipt.
Predicted Protein Size:	521
Gene Name:	karyopherin subunit alpha 4
Database Link:	NP_002259 Entrez Gene 16649 MouseEntrez Gene 361959 RatEntrez Gene 3840 Human O00629
Background:	The nuclear import of karyophilic proteins is directed by short amino acid sequences termed nuclear localization signals (NLSs). Karyopherins, or importins, are cytoplasmic proteins that recognize NLSs and dock NLS-containing proteins to the nuclear pore complex. The protein encoded by this gene shares the sequence similarity with <i>Xenopus</i> importin-alpha and <i>Saccharomyces cerevisiae</i> Srp1. This protein is found to interact with the NLSs of DNA helicase Q1 and SV40 T antigen.
Synonyms:	IPOA3; QIP1; SRP3



[View online »](#)

Product images:

Western blot analysis of extracts of various cell lines, using KPNA4 antibody.



Immunofluorescence analysis of U2OS cell using KPNA4 antibody. Blue: DAPI for nuclear staining.