

Product datasheet for **TA332496S**

CDA Rabbit Polyclonal Antibody

Product data:

| | |
|-------------------------|--|
| Product Type: | Primary Antibodies |
| Applications: | ICC/IF, WB |
| Recommended Dilution: | WB 1:500 - 1:2000;IF 1:50- 1:200 |
| Reactivity: | Human, Mouse, Rat |
| Host: | Rabbit |
| Isotype: | IgG |
| Clonality: | Polyclonal |
| Immunogen: | Recombinant protein of human CDA |
| Formulation: | Store at -20°C (regular) and -80°C (long term). Avoid freeze / thaw cycles. Buffer: PBS with 0.02% sodium azide, 50% glycerol, pH7.3. |
| Concentration: | lot specific |
| Purification: | Affinity purification |
| Conjugation: | Unconjugated |
| Storage: | Store at -20°C as received. |
| Stability: | Stable for 12 months from date of receipt. |
| Predicted Protein Size: | 146 |
| Gene Name: | cytidine deaminase |
| Database Link: | NP_001776 Entrez Gene 72269 MouseEntrez Gene 362638 RatEntrez Gene 978 Human P32320 |
| Background: | This gene encodes an enzyme involved in pyrimidine salvaging. The encoded protein forms a homotetramer that catalyzes the irreversible hydrolytic deamination of cytidine and deoxycytidine to uridine and deoxyuridine, respectively. It is one of several deaminases responsible for maintaining the cellular pyrimidine pool. Mutations in this gene are associated with decreased sensitivity to the cytosine nucleoside analogue cytosine arabinoside used in the treatment of certain childhood leukemias. |
| Synonyms: | CDD |

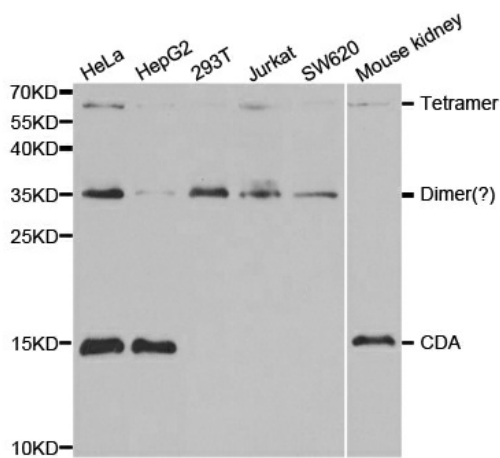


[View online »](#)

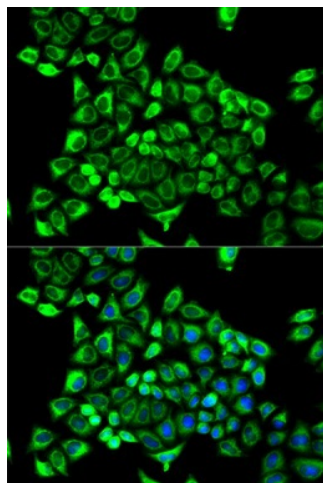
Protein Families: Stem cell - Pluripotency

Protein Pathways: Drug metabolism - other enzymes, Metabolic pathways, Pyrimidine metabolism

Product images:



Western blot analysis of extracts of various cell lines, using CDA antibody.



Immunofluorescence analysis of MCF-7 cell using CDA antibody. Blue: DAPI for nuclear staining