

Product datasheet for TA332496

CDA Rabbit Polyclonal Antibody

Product data:

Product Type:	Primary Antibodies
Applications:	IF, IHC, WB
Recommended Dilution:	WB 1:500 - 1:2000, IHC 1:50- 1:200, IF 1:50- 1:200
Reactivity:	Human, Mouse, Rat
Host:	Rabbit
Isotype:	IgG
Clonality:	Polyclonal
Immunogen:	Recombinant protein of human CDA
Formulation:	Store at -20°C (regular) and -80°C (long term). Avoid freeze / thaw cycles. Buffer: PBS with 0.02% sodium azide, 50% glycerol, pH7.3.
Concentration:	lot specific
Purification:	Affinity purification
Conjugation:	Unconjugated
Storage:	Store at -20°C as received.
Stability:	Stable for 12 months from date of receipt.
Predicted Protein Size:	146
Gene Name:	cytidine deaminase
Database Link:	NP_001776 Entrez Gene 72269 MouseEntrez Gene 362638 RatEntrez Gene 978 Human P32320
Background:	This gene encodes an enzyme involved in pyrimidine salvaging. The encoded protein forms a homotetramer that catalyzes the irreversible hydrolytic deamination of cytidine and deoxycytidine to uridine and deoxyuridine, respectively. It is one of several deaminases responsible for maintaining the cellular pyrimidine pool. Mutations in this gene are associated with decreased sensitivity to the cytosine nucleoside analogue cytosine arabinoside used in the treatment of certain childhood leukemias.
Synonyms:	CDD

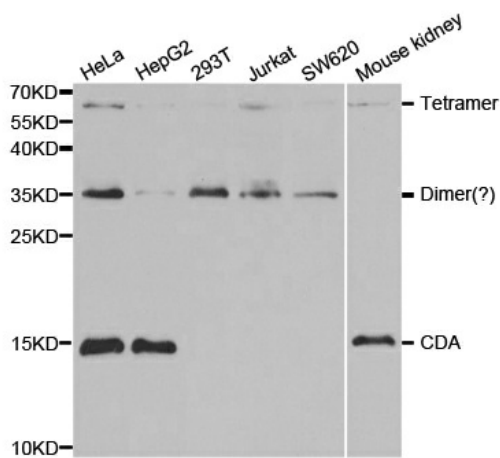


[View online »](#)

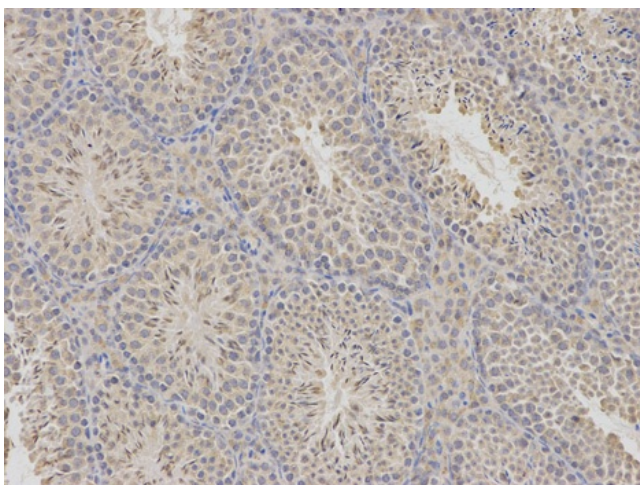
Protein Families: Stem cell - Pluripotency

Protein Pathways: Drug metabolism - other enzymes, Metabolic pathways, Pyrimidine metabolism

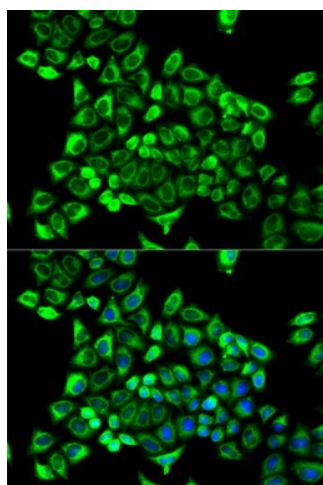
Product images:



Western blot analysis of extracts of various cell lines, using CDA antibody.



Immunohistochemical of paraffin-embedded mouse testis using CDA antibody at dilution of 1:100 (200x lens).



Immunofluorescence analysis of MCF-7 cell using CDA antibody. Blue: DAPI for nuclear staining