

## Product datasheet for **TA332494S**

### SNF2H (SMARCA5) Rabbit Polyclonal Antibody

#### Product data:

|                         |  |
|-------------------------|--|
| Product Type:           | Primary Antibodies   |
| Applications:           | ELISA, WB  |
| Recommended Dilution:   | WB, 1:500 - 1:2000<br>ELISA, Recommended starting concentration is 1 µg/mL. Please optimize the concentration based on your specific assay requirements.   |
| Reactivity:             | Human, Mouse   |
| Host:                   | Rabbit   |
| Isotype:                | IgG  |
| Clonality:              | Polyclonal   |
| Formulation:            | Store at -20°C (regular) and -80°C (long term). Avoid freeze / thaw cycles. Buffer: PBS with 0.02% sodium azide, 50% glycerol, pH7.3.  |
| Concentration:          | lot specific   |
| Purification:           | Affinity purification  |
| Conjugation:            | Unconjugated   |
| Storage:                | Store at -20°C. Avoid freeze / thaw cycles.  |
| Stability:              | Stable for 12 months from date of receipt.   |
| Predicted Protein Size: | 122kDa   |
| Gene Name:              | SWI/SNF related, matrix associated, actin dependent regulator of chromatin, subfamily a, member 5  |
| Database Link:          | <a href="#">NP_003592</a><br><a href="#">Entrez Gene 93762 Mouse</a> <a href="#">Entrez Gene 8467 Human</a><br><a href="#">O60264</a>  |
| Background:             | The protein encoded by this gene is a member of the SWI/SNF family of proteins. Members of this family have helicase and ATPase activities and are thought to regulate transcription of certain genes by altering the chromatin structure around those genes. The protein encoded by this gene is a component of the chromatin remodeling and spacing factor RSF, a facilitator of the transcription of class II genes by RNA polymerase II. The encoded protein is similar in sequence to the Drosophila ISWI chromatin remodeling protein. |

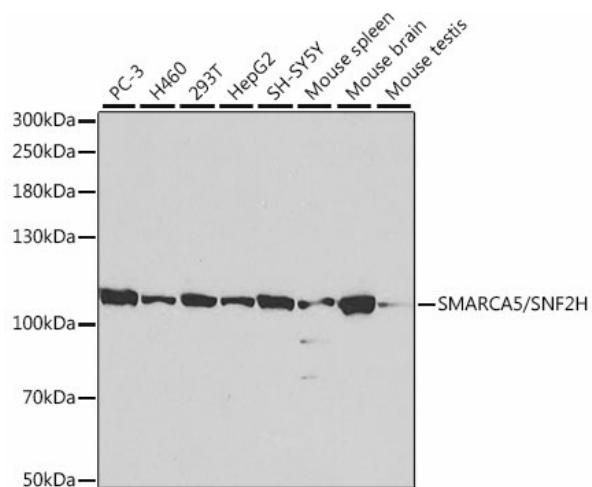


[View online »](#)

**Synonyms:** hISWI; hSNF2H; ISWI; SNF2H; WCRF135

**Protein Families:** Transcription Factors

**Product images:**



Western blot analysis of various lysates using SMARCA5/SNF2H Rabbit pAb ([TA332494]) at 1:1000 dilution.

Secondary antibody: HRP-conjugated Goat anti-Rabbit IgG (H+L) (AS014) at 1:10000 dilution.

Lysates/proteins: 25µg per lane.

Blocking buffer: 3% nonfat dry milk in TBST.

Detection: ECL Basic Kit (RM00020).

Exposure time: 2min.