

Product datasheet for **TA332494**

SNF2H (SMARCA5) Rabbit Polyclonal Antibody

Product data:

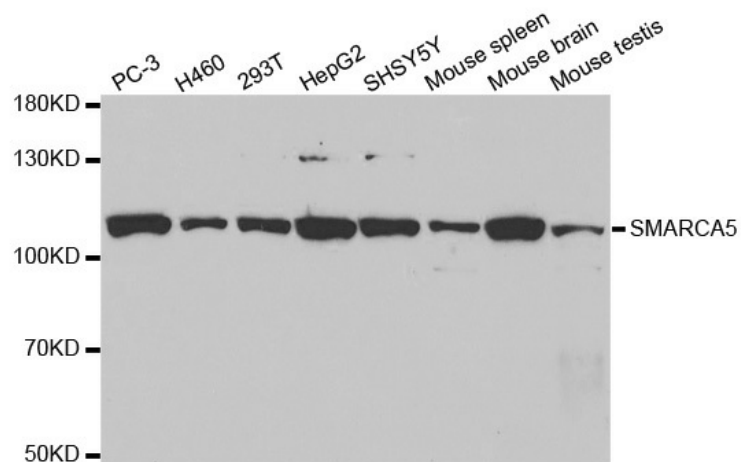
| | |
|-------------------------|--|
| Product Type: | Primary Antibodies |
| Applications: | WB |
| Recommended Dilution: | WB 1:500 - 1:2000 |
| Reactivity: | Human, Mouse |
| Host: | Rabbit |
| Isotype: | IgG |
| Clonality: | Polyclonal |
| Immunogen: | Recombinant protein of human SMARCA5 |
| Formulation: | Store at -20°C (regular) and -80°C (long term). Avoid freeze / thaw cycles. Buffer: PBS with 0.02% sodium azide, 50% glycerol, pH7.3. |
| Concentration: | lot specific |
| Purification: | Affinity purification |
| Conjugation: | Unconjugated |
| Storage: | Store at -20°C as received. |
| Stability: | Stable for 12 months from date of receipt. |
| Predicted Protein Size: | 1052 |
| Gene Name: | SWI/SNF related, matrix associated, actin dependent regulator of chromatin, subfamily a, member 5 |
| Database Link: | NP_003592 Entrez Gene 93762 Mouse Entrez Gene 8467 Human O60264 |
| Background: | The protein encoded by this gene is a member of the SWI/SNF family of proteins. Members of this family have helicase and ATPase activities and are thought to regulate transcription of certain genes by altering the chromatin structure around those genes. The protein encoded by this gene is a component of the chromatin remodeling and spacing factor RSF, a facilitator of the transcription of class II genes by RNA polymerase II. The encoded protein is similar in sequence to the Drosophila ISWI chromatin remodeling protein. |
| Synonyms: | hISWI; hSNF2H; ISWI; SNF2H; WCRF135 |



[View online »](#)

Protein Families: Transcription Factors

Product images:



Western blot analysis of extracts of various cell lines, using SMARCA5 antibody.