

Product datasheet for **TA332492**

AP2B1 Rabbit Polyclonal Antibody

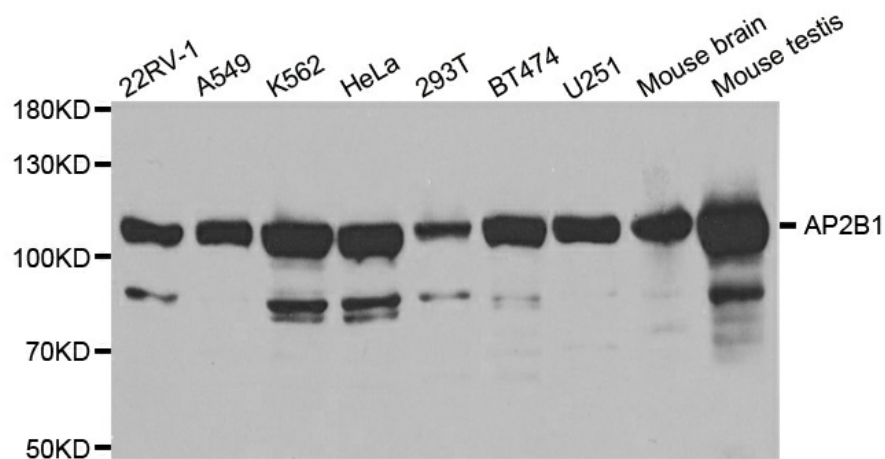
Product data:

Product Type:	Primary Antibodies
Applications:	IHC, WB
Recommended Dilution:	WB 1:500 - 1:2000
Reactivity:	Human, Mouse, Rat
Host:	Rabbit
Isotype:	IgG
Clonality:	Polyclonal
Immunogen:	Recombinant protein of human AP2B1
Formulation:	Store at -20°C (regular) and -80°C (long term). Avoid freeze / thaw cycles. Buffer: PBS with 0.02% sodium azide, 50% glycerol, pH7.3.
Concentration:	lot specific
Purification:	Affinity purification
Conjugation:	Unconjugated
Storage:	Store at -20°C as received.
Stability:	Stable for 12 months from date of receipt.
Predicted Protein Size:	937
Gene Name:	adaptor related protein complex 2 beta 1 subunit
Database Link:	NP_001273 Entrez Gene 71770 MouseEntrez Gene 140670 RatEntrez Gene 163 Human P63010
Background:	The protein encoded by this gene is one of two large chain components of the assembly protein complex 2, which serves to link clathrin to receptors in coated vesicles. The encoded protein is found on the cytoplasmic face of coated vesicles in the plasma membrane. Two transcript variants encoding different isoforms have been found for this gene.
Synonyms:	ADTB2; AP2-BETA; AP105B; CLAPB1
Protein Families:	Druggable Genome
Protein Pathways:	Endocytosis, Huntington's disease



[View online »](#)

Product images:



Western blot analysis of extracts of various cell lines, using AP2B1 antibody.