

Product datasheet for **TA332481**

PSMB5 Rabbit Polyclonal Antibody

Product data:

Product Type:	Primary Antibodies
Applications:	ICC/IF, IP, WB
Recommended Dilution:	WB 1:500 - 1:2000;IF 1:50- 1:200
Reactivity:	Human, Mouse, Rat
Host:	Rabbit
Isotype:	IgG
Clonality:	Polyclonal
Immunogen:	Recombinant protein of human PSMB5
Formulation:	Store at -20°C (regular) and -80°C (long term). Avoid freeze / thaw cycles. Buffer: PBS with 0.02% sodium azide, 50% glycerol, pH7.3.
Concentration:	lot specific
Purification:	Affinity purification
Conjugation:	Unconjugated
Storage:	Store at -20°C as received.
Stability:	Stable for 12 months from date of receipt.
Predicted Protein Size:	263
Gene Name:	proteasome subunit beta 5
Database Link:	NP_002788 Entrez Gene 19173 Mouse Entrez Gene 29425 Rat Entrez Gene 5693 Human P28074



[View online »](#)

Background:

The proteasome is a multicatalytic proteinase complex with a highly ordered ring-shaped 20S core structure. The core structure is composed of 4 rings of 28 non-identical subunits; 2 rings are composed of 7 alpha subunits and 2 rings are composed of 7 beta subunits. Proteasomes are distributed throughout eukaryotic cells at a high concentration and cleave peptides in an ATP/ubiquitin-dependent process in a non-lysosomal pathway. An essential function of a modified proteasome, the immunoproteasome, is the processing of class I MHC peptides. This gene encodes a member of the proteasome B-type family, also known as the T1B family, that is a 20S core beta subunit in the proteasome. This catalytic subunit is not present in the immunoproteasome and is replaced by catalytic subunit 3i (proteasome beta 8 subunit). Multiple transcript variants encoding different isoforms have been found for this gene.

Synonyms:

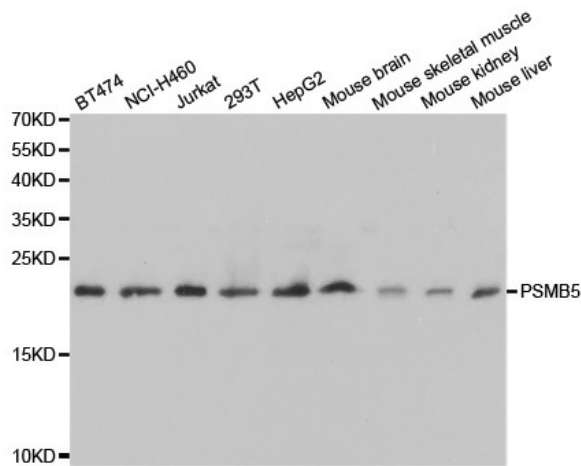
LMPX; MB1; X

Protein Families:

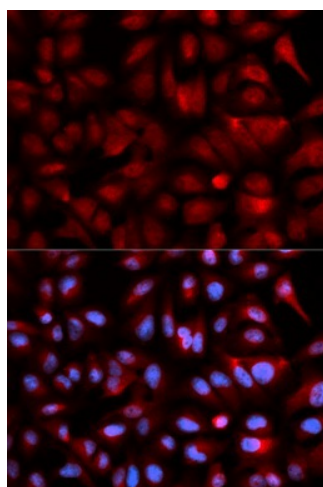
Protease

Protein Pathways:

Proteasome

Product images:

Western blot analysis of extracts of various cell lines, using PSMB5 antibody.



Immunofluorescence analysis of U2OS cell using PSMB5 antibody. Blue: DAPI for nuclear staining.