

Product datasheet for TA332480S

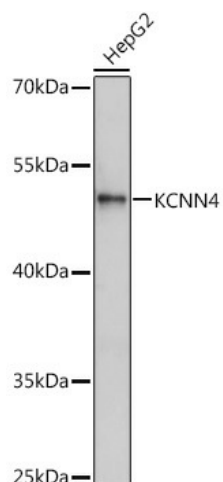
KCNN4 Rabbit Polyclonal Antibody

Product data:

Product Type:	Primary Antibodies
Applications:	ELISA, WB
Recommended Dilution:	WB, 1:500 - 1:2000 ELISA, Recommended starting concentration is 1 µg/mL. Please optimize the concentration based on your specific assay requirements.
Reactivity:	Human
Host:	Rabbit
Isotype:	IgG
Clonality:	Polyclonal
Formulation:	PBS with 0.09% Sodium azide, 50% glycerol, pH 7.3.
Concentration:	lot specific
Purification:	Affinity purification
Conjugation:	Unconjugated
Storage:	Store at -20°C. Avoid freeze / thaw cycles.
Stability:	Stable for 12 months from date of receipt.
Predicted Protein Size:	48kDa
Gene Name:	potassium calcium-activated channel subfamily N member 4
Database Link:	NP_002241 Entrez Gene 3783 Human O15554
Background:	The protein encoded by this gene is part of a potentially heterotetrameric voltage-independent potassium channel that is activated by intracellular calcium. Activation is followed by membrane hyperpolarization, which promotes calcium influx. The encoded protein may be part of the predominant calcium-activated potassium channel in T-lymphocytes. This gene is similar to other KCNN family potassium channel genes, but it differs enough to possibly be considered as part of a new subfamily.
Synonyms:	hIKCa1; hKCa4; hSK4; IK; IK1; IKCA1; KCa3.1; KCA4; SK4
Protein Families:	Druggable Genome, Ion Channels: Potassium, Transmembrane


[View online »](#)

Product images:



Western blot analysis of lysates from HepG2 cells