

## Product datasheet for **TA332480**

### KCNN4 Rabbit Polyclonal Antibody

#### Product data:

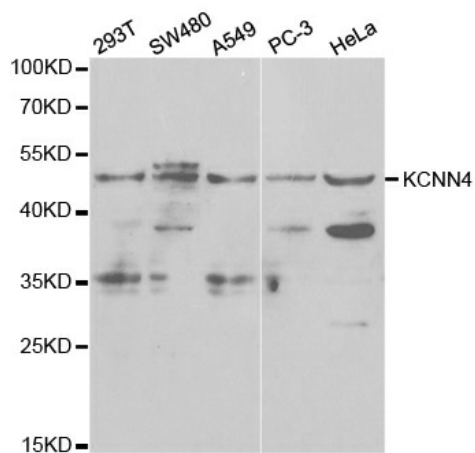
Product Type:	Primary Antibodies
Applications:	WB
Recommended Dilution:	WB 1:500 - 1:2000
Reactivity:	Human
Host:	Rabbit
Isotype:	IgG
Clonality:	Polyclonal
Immunogen:	Recombinant protein of human KCNN4
Formulation:	Store at -20°C (regular) and -80°C (long term). Avoid freeze / thaw cycles. Buffer: PBS with 0.02% sodium azide, 50% glycerol, pH7.3.
Concentration:	lot specific
Purification:	Affinity purification
Conjugation:	Unconjugated
Storage:	Store at -20°C as received.
Stability:	Stable for 12 months from date of receipt.
Predicted Protein Size:	427
Gene Name:	potassium calcium-activated channel subfamily N member 4
Database Link:	<a href="#">NP_002241</a> <a href="#">Entrez Gene 3783 Human</a> <a href="#">Q15554</a>
Background:	The protein encoded by this gene is part of a potentially heterotetrameric voltage-independent potassium channel that is activated by intracellular calcium. Activation is followed by membrane hyperpolarization, which promotes calcium influx. The encoded protein may be part of the predominant calcium-activated potassium channel in T-lymphocytes. This gene is similar to other KCNN family potassium channel genes, but it differs enough to possibly be considered as part of a new subfamily.
Synonyms:	hIKCa1; hKCa4; hSK4; IK; IK1; IKCA1; KCa3.1; KCA4; SK4



[View online »](#)

Protein Families: Druggable Genome, Ion Channels: Potassium, Transmembrane

### Product images:



Western blot analysis of extracts of various cell lines, using KCNN4 antibody