

Product datasheet for **TA332473**

Ornithine Decarboxylase (ODC1) Rabbit Polyclonal Antibody

Product data:

Product Type:	Primary Antibodies
Applications:	ICC/IF, WB
Recommended Dilution:	WB 1:500 - 1:2000
Reactivity:	Human, Mouse, Rat
Host:	Rabbit
Isotype:	IgG
Clonality:	Polyclonal
Immunogen:	Recombinant protein of human ODC1
Formulation:	Store at -20°C (regular) and -80°C (long term). Avoid freeze / thaw cycles. Buffer: PBS with 0.02% sodium azide, 50% glycerol, pH7.3.
Concentration:	lot specific
Purification:	Affinity purification
Conjugation:	Unconjugated
Storage:	Store at -20°C as received.
Stability:	Stable for 12 months from date of receipt.
Predicted Protein Size:	461
Gene Name:	ornithine decarboxylase 1
Database Link:	NP_002530 Entrez Gene 18263 Mouse Entrez Gene 24609 Rat Entrez Gene 4953 Human P11926
Background:	Ornithine decarboxylase (ODC) is also named as ODC1 and belongs to the Orn/Lys/Arg decarboxylase class-II family. It catalyzes the conversion of ornithine to putrescine, the first step and a major site of regulation of polyamine biosynthesis. The level of ODC is known to be controlled at several sites, namely transcription, translation, and enzyme degradation. Polyamines can stimulate the degradation of ODC as a type of negative feedback control (PMID:8486633). This protein can be phosphorylated in vivo (PMID:8798774). This antibody is specific to ODC1.
Synonyms:	ODC

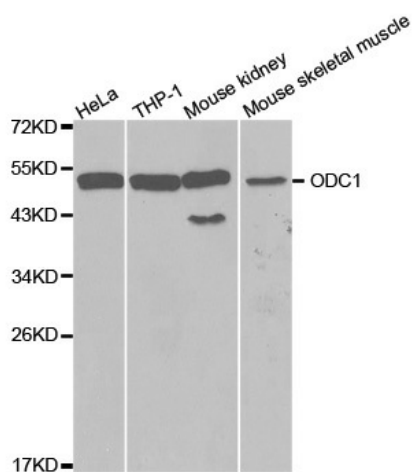


[View online »](#)

Protein Families: Druggable Genome

Protein Pathways: Arginine and proline metabolism, Glutathione metabolism, Metabolic pathways

Product images:



Western blot analysis of extracts of various cell lines, using ODC1 antibody.