

## Product datasheet for **TA332472S**

### SMAD5 Rabbit Polyclonal Antibody

#### Product data:

Product Type:	Primary Antibodies
Applications:	ELISA, IHC, WB
Recommended Dilution:	WB, 1:500 - 1:1000 IHC-P, 1:50 - 1:200 ELISA, Recommended starting concentration is 1 µg/mL. Please optimize the concentration based on your specific assay requirements.
Reactivity:	Human, Mouse, Rat
Host:	Rabbit
Isotype:	IgG
Clonality:	Polyclonal
Formulation:	Store at -20°C (regular) and -80°C (long term). Avoid freeze / thaw cycles. Buffer: PBS with 0.02% sodium azide, 50% glycerol, pH7.3.
Concentration:	lot specific
Purification:	Affinity purification
Conjugation:	Unconjugated
Storage:	Store at -20°C. Avoid freeze / thaw cycles.
Stability:	Stable for 12 months from date of receipt.
Predicted Protein Size:	52kDa
Gene Name:	SMAD family member 5
Database Link:	<a href="#">NP_005894</a> <a href="#">Entrez Gene 17129 Mouse</a> <a href="#">Entrez Gene 59328 Rat</a> <a href="#">Entrez Gene 4090 Human</a> <a href="#">Q99717</a>
Background:	The protein encoded by this gene is involved in the transforming growth factor beta signaling pathway that results in an inhibition of the proliferation of hematopoietic progenitor cells. The encoded protein is activated by bone morphogenetic proteins type 1 receptor kinase, and may be involved in cancer. Alternative splicing results in multiple transcript variants.
Synonyms:	DWFC; JV5-1; MADH5

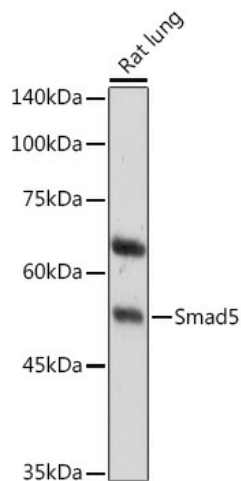


[View online »](#)

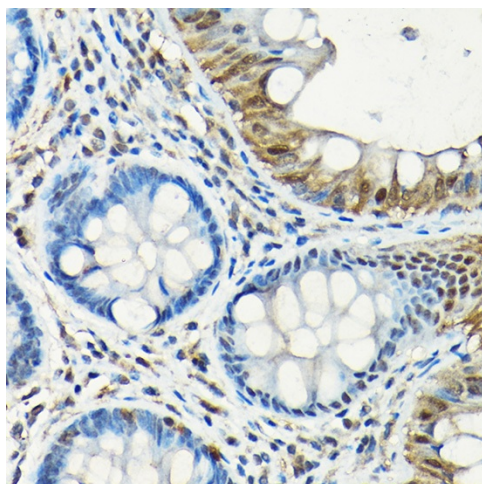
**Protein Families:** Cancer stem cells, Druggable Genome, ES Cell Differentiation/IPS, Stem cell relevant signaling - JAK/STAT signaling pathway, Stem cell relevant signaling - TGF $\beta$ /BMP signaling pathway, Transcription Factors

**Protein Pathways:** TGF-beta signaling pathway

**Product images:**



Western blot analysis of lysates from Rat lung



Immunohistochemistry analysis of paraffin-embedded Human colon using Smad5 Rabbit pAb ([TA332472]) at dilution of 1:100 (40x lens). High pressure antigen retrieval performed with 0.01M Citrate Bufferr (pH 6.0) prior to IHC staining.