

## Product datasheet for **TA332470S**

### **FE65 (APBB1) Rabbit Polyclonal Antibody**

#### **Product data:**

|                         |                                                                                                                                                        |
|-------------------------|--------------------------------------------------------------------------------------------------------------------------------------------------------|
| Product Type:           | Primary Antibodies                                                                                                                                     |
| Applications:           | ELISA, WB                                                                                                                                              |
| Recommended Dilution:   | WB, 1:50 - 1:200<br>ELISA, Recommended starting concentration is 1 µg/mL. Please optimize the concentration based on your specific assay requirements. |
| Reactivity:             | Human, Mouse                                                                                                                                           |
| Host:                   | Rabbit                                                                                                                                                 |
| Isotype:                | IgG                                                                                                                                                    |
| Clonality:              | Polyclonal                                                                                                                                             |
| Formulation:            | Store at -20°C (regular) and -80°C (long term). Avoid freeze / thaw cycles. Buffer: PBS with 0.02% sodium azide, 50% glycerol, pH7.3.                  |
| Concentration:          | lot specific                                                                                                                                           |
| Purification:           | Affinity purification                                                                                                                                  |
| Conjugation:            | Unconjugated                                                                                                                                           |
| Storage:                | Store at -20°C. Avoid freeze / thaw cycles.                                                                                                            |
| Stability:              | Stable for 12 months from date of receipt.                                                                                                             |
| Predicted Protein Size: | 77kDa                                                                                                                                                  |
| Gene Name:              | amyloid beta precursor protein binding family B member 1                                                                                               |
| Database Link:          | <a href="#">NP_001155</a><br><a href="#">Entrez Gene 11785 Mouse</a> <a href="#">Entrez Gene 322 Human</a><br><a href="#">O00213</a>                   |



[View online »](#)

**Background:**

The protein encoded by this gene is a member of the Fe65 protein family. It is an adaptor protein localized in the nucleus. It interacts with the Alzheimer's disease amyloid precursor protein (APP), transcription factor CP2/LSF/LBP1 and the low-density lipoprotein receptor-related protein. APP functions as a cytosolic anchoring site that can prevent the gene product's nuclear translocation. This encoded protein could play an important role in the pathogenesis of Alzheimer's disease. It is thought to regulate transcription. Also it is observed to block cell cycle progression by downregulating thymidylate synthase expression. Multiple alternatively spliced transcript variants encoding different isoforms have been described for this gene.

**Synonyms:**

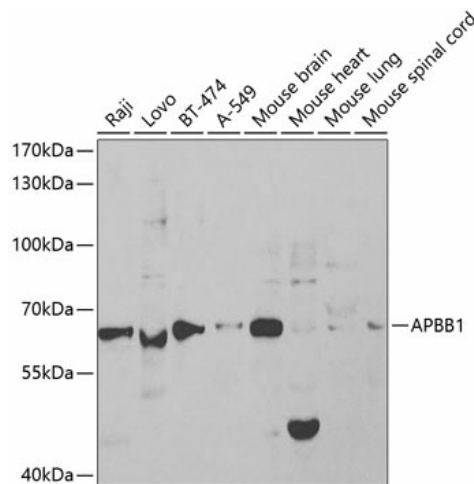
FE65; MGC:9072; RIR

**Protein Families:**

Transcription Factors

**Protein Pathways:**

Alzheimer's disease

**Product images:**


Western blot analysis of various lysates using APBB1 Rabbit pAb ([TA332470]) at 1:1000 dilution.  
Secondary antibody: HRP-conjugated Goat anti-Rabbit IgG (H+L) (AS014) at 1:10000 dilution.  
Lysates/proteins: 25µg per lane.  
Blocking buffer: 3% nonfat dry milk in TBST.