

## Product datasheet for **TA332469**

### DNA Polymerase iota (POLI) Rabbit Polyclonal Antibody

#### Product data:

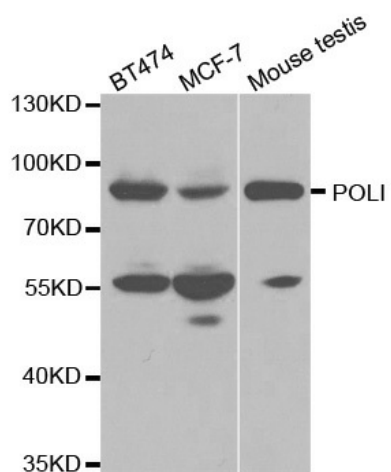
Product Type:	Primary Antibodies
Applications:	WB
Recommended Dilution:	WB 1:500 - 1:2000
Reactivity:	Human, Mouse
Host:	Rabbit
Isotype:	IgG
Clonality:	Polyclonal
Immunogen:	Recombinant protein of human POLI
Formulation:	Store at -20°C (regular) and -80°C (long term). Avoid freeze / thaw cycles. Buffer: PBS with 0.02% sodium azide, 50% glycerol, pH7.3.
Concentration:	lot specific
Purification:	Affinity purification
Conjugation:	Unconjugated
Storage:	Store at -20°C as received.
Stability:	Stable for 12 months from date of receipt.
Predicted Protein Size:	80 kDa
Gene Name:	polymerase (DNA) iota
Database Link:	<a href="#">NP_009126</a> <a href="#">Entrez Gene 26447 Mouse</a> <a href="#">Entrez Gene 11201 Human</a> <a href="#">Q9UNA4</a>
Background:	Mammalian Pol $\hat{1}$ owns an unusual combination of properties: it is stimulated by Mn <sup>2+</sup> ions, can bypass some DNA lesions and misincorporates $\hat{2}$ ?G $\hat{2}$ ? opposite template $\hat{2}$ ?T $\hat{2}$ ? more frequently than incorporates the correct $\hat{2}$ ?A $\hat{2}$ ? _ It also was shown to possess dRP lyase activity. In addition, Pol $\hat{1}$ is much more efficient in the presence of Mn <sup>2+</sup> in comparison to Mg <sup>2+</sup> . _ It has been proposed that POLI involves in immunoglobulin somatic hypermutation (SHM), bypass of deaminated cytosines, several adducts of the purine bases. DNA strand crosslinks and is involved in DNA repair under oxidative stress. _
Synonyms:	RAD3OB; RAD30B



[View online »](#)

Protein Families: Druggable Genome

### Product images:



Western blot analysis of extracts of various cell lines, using POLI antibody.