

## Product datasheet for TA332465

### GLO1 Rabbit Polyclonal Antibody

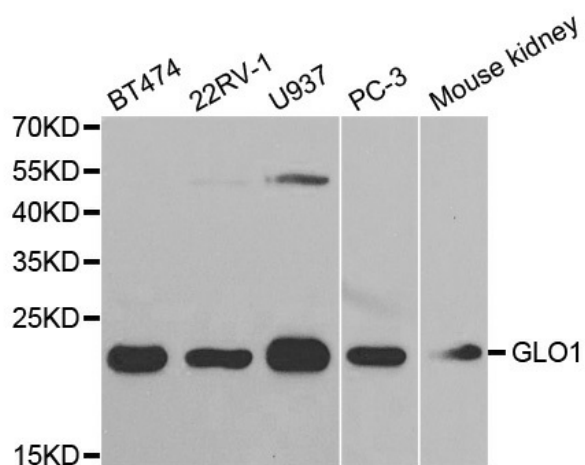
#### Product data:

Product Type:	Primary Antibodies
Applications:	ICC/IF, IHC, WB
Recommended Dilution:	WB 1:500 - 1:2000;IF 1:50 - 1:200
Reactivity:	Human, Mouse
Host:	Rabbit
Isotype:	IgG
Clonality:	Polyclonal
Immunogen:	Recombinant protein of human GLO1
Formulation:	Store at -20°C (regular) and -80°C (long term). Avoid freeze / thaw cycles. Buffer: PBS with 0.02% sodium azide, 50% glycerol, pH7.3.
Concentration:	lot specific
Purification:	Affinity purification
Conjugation:	Unconjugated
Storage:	Store at -20°C as received.
Stability:	Stable for 12 months from date of receipt.
Predicted Protein Size:	21 kDa
Gene Name:	glyoxalase I
Database Link:	<a href="#">NP_006699</a> <a href="#">Entrez Gene 109801 Mouse</a> <a href="#">Entrez Gene 2739 Human</a> <a href="#">Q04760</a>
Background:	The enzyme encoded by this gene is responsible for the catalysis and formation of S-lactoyl-glutathione from methylglyoxal condensation and reduced glutathione. Glyoxalase I is linked to HLA and is localized to 6p21.3-p21.1, between HLA and the centromere.
Synonyms:	GLOD1; GLYI; HEL-S-74
Protein Pathways:	Pyruvate metabolism



[View online »](#)

## Product images:



Western blot analysis of extracts of various cell lines, using GLO1 antibody.