

## Product datasheet for **TA332462**

### mtTFA (TFAM) Rabbit Polyclonal Antibody

#### Product data:

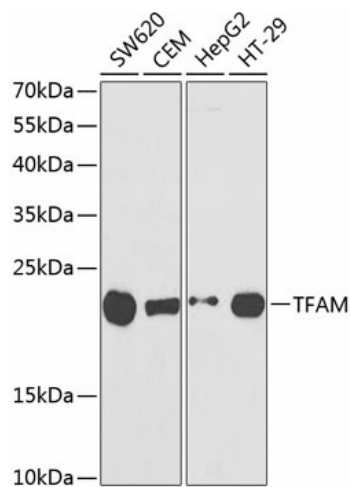
Product Type:	Primary Antibodies
Applications:	IF, IHC, WB
Recommended Dilution:	WB 1:500 - 1:2000;IHC 1:50 - 1:200
Reactivity:	Human, Mouse, Rat
Host:	Rabbit
Isotype:	IgG
Clonality:	Polyclonal
Immunogen:	Recombinant protein of human TFAM
Formulation:	Store at -20°C (regular) and -80°C (long term). Avoid freeze / thaw cycles. Buffer: PBS with 0.02% sodium azide, 50% glycerol, pH7.3.
Concentration:	lot specific
Purification:	Affinity purification
Conjugation:	Unconjugated
Storage:	Store at -20°C as received.
Stability:	Stable for 12 months from date of receipt.
Predicted Protein Size:	29 kDa
Gene Name:	transcription factor A, mitochondrial
Database Link:	<a href="#">NP_003192</a> <a href="#">Entrez Gene 21780 Mouse</a> <a href="#">Entrez Gene 7019 Human</a> <a href="#">Q00059</a>
Background:	This gene encodes a key mitochondrial transcription factor containing two high mobility group motifs. The encoded protein also functions in mitochondrial DNA replication and repair. Sequence polymorphisms in this gene are associated with Alzheimer's and Parkinson's diseases. There are pseudogenes for this gene on chromosomes 6, 7, and 11. Alternative splicing results in multiple transcript variants.
Synonyms:	MTTF1; MTTFA; TCF6; TCF6L1; TCF6L2; TCF6L3
Protein Families:	Druggable Genome, Transcription Factors



[View online »](#)

Protein Pathways: Huntington's disease

### Product images:



Western blot analysis of extracts of various cell lines, using TFAM antibody (TA332462) at 1:1000 dilution. | Secondary antibody: HRP Goat Anti-Rabbit IgG (H+L) at 1:10000 dilution. | Lysates/proteins: 25ug per lane. | Blocking buffer: 3% nonfat dry milk in TBST.